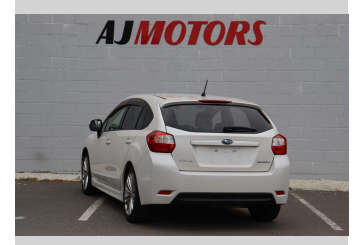



# 2013 Subaru Impreza AWD



**Purchase Price** **\$13,980**

Includes GST  
Excludes on-road costs of \$695

Finance may be available on this vehicle. Ask one of our friendly staff for more information.



Gain peace of mind with Mechanical Breakdown Insurance. **Ask us how.**



**Top features**

- » ABS
- » ABS Braking
- » Adaptive Cruise Contro...
- » Air Conditioning
- » Alloy Wheels
- » Auto air-condition
- » Auto headlight
- » Auto Start Stop
- » Bluetooth
- » Central Locking
- » Central Locking
- » Central Locking
- » Child seat anchor poin...
- » Climate Control
- » Cruise control
- » Cruise Control
- » Dual air-condition
- » Dynamic Chassis Contro...

Body Style  
**4 door, Station Wagon**

Odometer  
**81,100 km**

Engine  
**2000 cc, Internal Combustion**

Fuel Type  
**Petrol**

Transmission  
**Automatic, AWD**

Wheels  
**17", Factory Alloys**

VIN  
**7AT0GF09X24029605**

Interior  
**Black, Plastic**

Safety



Based on 2023 UCSR rating for 12-16 models

Reg No.  
-

Ext Colour  
**White**

History  
**Ex-Overseas**

Seats  
**5 seats, Leather Accented**

CO2 Emissions  
**★★★★☆**  
**163 grams/km**

Energy Economy  
**★★☆☆☆☆**

**Annual fuel cost of \$2,740**  
**7L per 100km**

Cost per year is an estimate based on petrol price of \$2.80 per litre and an average distance of 14000 km. Emissions and Energy Economy figures standardised to 3P WLTP.

**Stock ID: 19652**



AJ Motors Sockburn | Phone 0800 566 789 | Email sockburn@ajmotors.co.nz  
466 Blenheim Road, Sockburn, Christchurch 8042, New Zealand  
www.ajmotors.co.nz