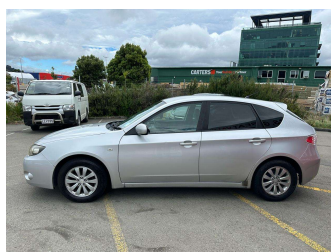
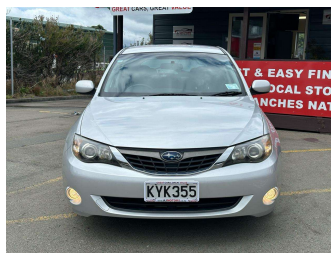



2009 Subaru Impreza 1.5L




Purchase Price **\$5,675**
Includes GST, Registration & Licensing

Finance may be available on this vehicle. Ask one of our friendly staff for more information.



Gain peace of mind with Mechanical Breakdown Insurance. **Ask us how.**



Top features
None Listed

Body Style
5 door, Wagon

Odometer
226,650 km

Engine
1490 cc, Internal Combustion

Fuel Type
#91 Petrol

Transmission
Automatic

Wheels
15", Alloy

VIN
7AT0GF09X17024928

Interior
Black, Plastic

Safety



Based on 2025 UCSR rating for 07-11 models

Reg No.
KYK355

Ext Colour
Silver

History
-

Seats
5 seats, Fabric

CO2 Emissions
★★★★☆
174 grams/km

Energy Economy
★★★☆☆

Annual fuel cost of \$2,860
7.3L per 100km

Cost per year is an estimate based on petrol price of \$2.80 per litre and an average distance of 14000 km. Emissions and Energy Economy figures standardised to 3P WLTP.

Stock ID: 34015



AJ Motors Wellington | Phone 0800 566 789 | Email kim@ajmotors.co.nz
35 Annie Huggan Grove, Petone, Lower Hutt 5012, New Zealand
www.ajmotors.co.nz