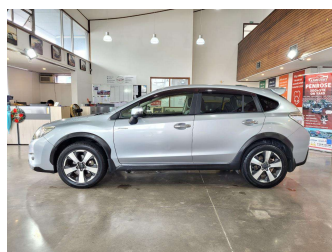



# 2014 Subaru XV HYBRID / AWD



**Purchase Price** **\$14,980**

Includes GST  
Excludes on-road costs of \$695

Finance may be available on this vehicle. Ask one of our friendly staff for more information.



Gain peace of mind with Mechanical Breakdown Insurance. **Ask us how.**



**Top features**

- » ABS
- » Air Conditioning
- » Alloy Wheels
- » Bluetooth
- » Central Locking
- » Child seat anchor poin...
- » Cruise control
- » Dual Climate Control
- » Eco Mode
- » Electric Mirrors (Retr...
- » Eyesight
- » Fog Lights
- » Lane Departure Warning
- » Multi-function steerin...
- » Paddle Gear Shifters
- » Power window
- » Pre crush safety
- » Push button start

**Body Style**  
5 door, RV/SUV

**Odometer**  
87,061 km

**Engine**  
1990 cc, Internal Combustion

**Fuel Type**  
Petrol


**Transmission**  
Automatic, 4WD

**Wheels**  
17", Factory Alloys

**VIN**  
7AT0GF1XX26017939

**Interior**  
Black, Plastic

**Safety**



Based on 2025 UCSR rating for 12-16 models

**Reg No.**  
-

**Ext Colour**  
Silver

**History**  
Ex-Overseas

**Seats**  
5 seats, Fabric

**CO2 Emissions**  
★★★★☆  
137 grams/km

**Energy Economy**  
★★★★☆☆  
Annual fuel cost of \$2,310  
5.9L per 100km

Cost per year is an estimate based on petrol price of \$2.80 per litre and an average distance of 14000 km. Emissions and Energy Economy figures standardised to 3P WLTP.

**Stock ID: 32368**



AJ Motors Wellington | Phone 0800 566 789 | Email kim@ajmotors.co.nz  
35 Annie Huggan Grove, Petone, Lower Hutt 5012, New Zealand  
www.ajmotors.co.nz