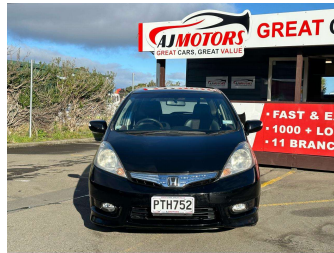



2011 Honda Fit Shuttle / Hybrid



Purchase Price **\$6,980**

Includes GST
Excludes on-road costs of \$695

Finance may be available on this vehicle. Ask one of our friendly staff for more information.



Gain peace of mind with Mechanical Breakdown Insurance. **Ask us how.**



Top features

None Listed

Body Style
Wagon

Odometer
128,700 km

Engine
1339 cc, Hybrid


Fuel Type
Hybrid

Transmission
Automatic, 2WD

Wheels
15", Hubcap

VIN
7AT08G2YX22002146

Interior
Black and Brown, Plastic

Safety

Based on 2025 VSRR rating

Reg No.
PTH752

Ext Colour
Black

History
-

Seats
5 seats, leather & fabric

CO2 Emissions
★★★★☆
114 grams/km

Energy Economy
★★★★☆☆
Annual fuel cost of \$1,920
4.9L per 100km

Cost per year is an estimate based on petrol price of \$2.80 per litre and an average distance of 14000 km. Emissions and Energy Economy figures standardised to 3P WLTP.

Stock ID: 35348



AJ Motors Wellington | Phone 0800 566 789 | Email kim@ajmotors.co.nz
35 Annie Huggan Grove, Petone, Lower Hutt 5012, New Zealand
www.ajmotors.co.nz