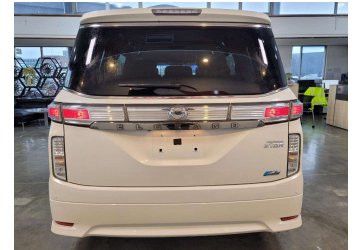


# 2012 Nissan Elgrand 250 HIGHWAY STAR



Purchase Price

**\$14,980**

Includes GST  
Excludes on-road costs of \$695

Finance may be available on this vehicle. Ask one of our friendly staff for more information.

**finance  
NOW**

Gain peace of mind with Mechanical Breakdown Insurance. **Ask us how.**

**autosure**  
INSURANCE

## Top features

- » ABS
- » Air Conditioning
- » All auto windows
- » Alloy Wheels
- » Bluetooth
- » Central Locking
- » Child seat anchor poin...
- » Eco Mode
- » Electric Mirrors (Retr...
- » Electronic slide door...
- » Fog Lights
- » Headlights - LED with...
- » Keyless entry
- » Multi-function steerin...
- » Parking Sensors
- » Power Sliding Door
- » Power window
- » Pre crush safety

Body Style

**5 door, Station Wagon**

Odometer

**124,610 km**

Engine

**2500 cc, Internal Combustion**

Fuel Type

**Petrol**

Transmission

**Automatic, Front Wheel**

Wheels

**18", Factory Alloys**

VIN

**7AT0DH6MX25034398**

Interior

**Black, Plastic**

Safety



Based on 2024 VSRR rating

Reg No.

-

Ext Colour

**Pearl**

History

**Ex-Overseas**

Seats

**5 seats, Fabric**

CO2 Emissions

★ ★ ★ ☆ ☆ ☆

**233 grams/km**

Energy Economy

★ ☆ ☆ ☆ ☆ ☆

**Annual fuel cost of \$3,920  
10L per 100km**

Cost per year is an estimate based on petrol price of \$2.80 per litre and an average distance of 14000 km. Emissions and Energy Economy figures standardised to 3P WLTP.

**Stock ID: 27638**



AJ Motors Wellington | Phone 0800 566 789 | Email kim@ajmotors.co.nz  
35 Annie Huggan Grove, Petone, Lower Hutt 5012, New Zealand  
www.ajmotors.co.nz