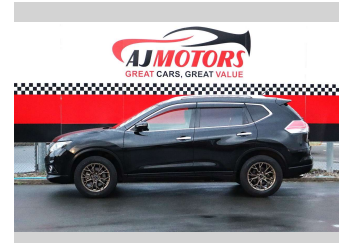
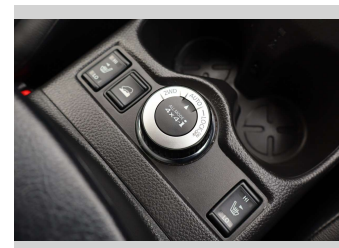



2016 Nissan X-Trail 2.0 petrol




Purchase Price **POA**
Includes GST, Registration & Licensing

Finance may be available on this vehicle. Ask one of our friendly staff for more information.



Gain peace of mind with Mechanical Breakdown Insurance. **Ask us how.**



- Top features**
- » 360 Degree Reversing C...
 - » ABS
 - » Auto air-condition
 - » Auto headlight
 - » Drive Mode Selector (2...
 - » Eco Mode
 - » Fog Lights
 - » Heated Seats
 - » Parking Sensors
 - » Power Tailgate
 - » Power Tailgate
 - » Rear Wiper
 - » Reversing Camera
 - » Smart key system with...
 - » Traction control

Body Style
5 door, RV/SUV

Odometer
115,600 km

Engine
1997 cc, Internal Combustion

Fuel Type
Petrol

Transmission
Automatic, 4WD

Wheels
17"

VIN
7AT0DH6LX24046594

Interior
Black

Safety



Based on 2025 UCSR rating for 14-22 models

Reg No.
QZC732

Ext Colour
Black

History
-

Seats
7 seats, Leather

CO2 Emissions
★★★★☆
169 grams/km

Energy Economy
★★★★☆☆

Annual fuel cost of \$2,820
7.2L per 100km

Cost per year is an estimate based on petrol price of \$2.80 per litre and an average distance of 14000 km. Emissions and Energy Economy figures standardised to 3P WLTP.

Stock ID: 31751



AJ Motors Christchurch | Phone 0800 566 789 | Email christchurch@ajmotors.co.nz
207 Main South Road, Hornby, Christchurch 8042, New Zealand
www.ajmotors.co.nz