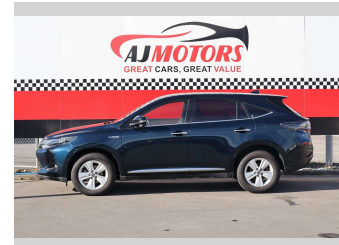
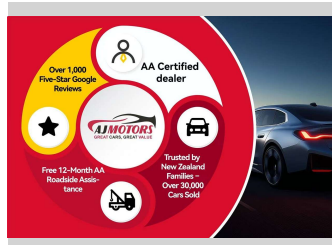
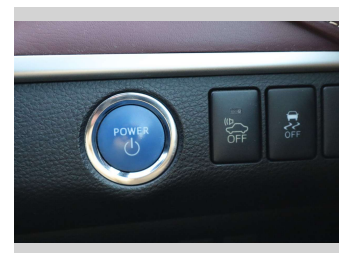



2015 Toyota Harrier HYBRID




Purchase Price **POA**
Includes GST, Registration & Licensing

Finance may be available on this vehicle. Ask one of our friendly staff for more information.



Gain peace of mind with Mechanical Breakdown Insurance. Ask us how.



- Top features**
- » ABS
 - » Auto air-condition
 - » Auto headlight
 - » electric seats
 - » Fog Lights
 - » Push button start
 - » Rear Wiper
 - » Reversing Camera
 - » Smart key system with front door touch sensors

Body Style
4 door, RV/SUV

Odometer
123,600 km

Engine
2493 cc, Hybrid

Fuel Type
Petrol

Transmission
Automatic, E-FOUR

Wheels
17"

VIN
7AT0H634X26035484

Interior
Black

Safety



Based on 2025 VSRR rating

Reg No.

-

Ext Colour
Blue

History
Ex-Overseas

Seats
5 seats

CO2 Emissions
★★★★☆
129 grams/km

Energy Economy
★★★★☆☆

Annual fuel cost of \$2,200
5.6L per 100km

Cost per year is an estimate based on petrol price of \$2.80 per litre and an average distance of 14000 km. Emissions and Energy Economy figures standardised to 3P WLTP.

Stock ID: 34340



AJ Motors Christchurch | Phone 0800 566 789 | Email christchurch@ajmotors.co.nz
207 Main South Road, Hornby, Christchurch 8042, New Zealand
www.ajmotors.co.nz