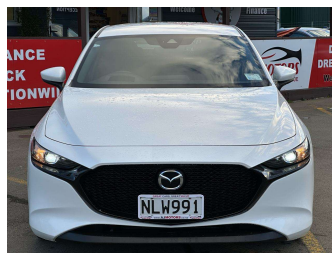



2021 Mazda 3 GSX 2.0P/6AT NZ NEW! Axela




Purchase Price **\$19,980**

Includes GST
Excludes on-road costs of \$695

Finance may be available on this vehicle. Ask one of our friendly staff for more information.



Gain peace of mind with Mechanical Breakdown Insurance. **Ask us how.**



Top features

- » Adaptive Cruise Control
- » All auto windows
- » Auto Hold
- » Bluetooth
- » Electronic Hand Brake
- » Hand-free car phone
- » i-Stop
- » NZ GPS
- » Parking Sensors
- » Sport mode

Body Style
5 door, Hatchback

Odometer
106,000 km

Engine
2000 cc, Internal Combustion

Fuel Type
Petrol

Transmission
6-Speed Automatic, Front

Wheels
16", Factory Alloys

VIN
JM0BP2H7A01134580

Interior
Black, Leather and Plastic

Safety



Based on 2019 ANCAP rating for 19+ models

Reg No.
NLW991

Ext Colour
White

History
NZ New

Seats
5 seats, Fabric

CO2 Emissions
★★★★☆

162 grams/km

Energy Economy
★★☆☆☆

Annual fuel cost of \$2,700
6.9L per 100km

Cost per year is an estimate based on petrol price of \$2.80 per litre and an average distance of 14000 km. Emissions and Energy Economy figures standardised to 3P WLTP.

Stock ID: 27664



AJ Motors Wellington | Phone 0800 566 789 | Email kim@ajmotors.co.nz
35 Annie Huggan Grove, Petone, Lower Hutt 5012, New Zealand
www.ajmotors.co.nz