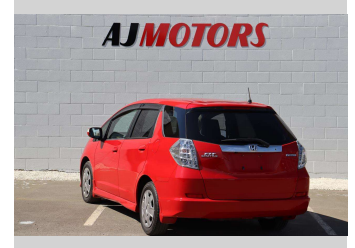
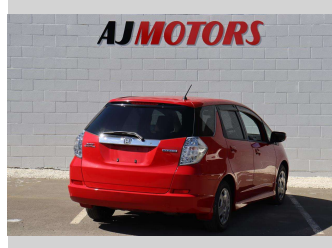
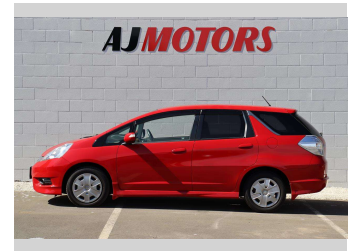
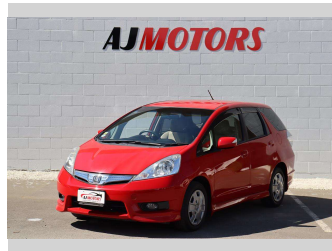



2011 Honda Fit SHUTTLE HYBRID SMART



Purchase Price **\$8,488**

Includes GST
Excludes on-road costs of \$695

Finance may be available on this vehicle. Ask one of our friendly staff for more information.



Gain peace of mind with Mechanical Breakdown Insurance. **Ask us how.**



Top features

- » Air Conditioning
- » Auto air-condition
- » Auto headlight
- » Auto Start Stop
- » CD Player
- » Central Locking
- » Child seat anchor poin...
- » Cruise control
- » DVD Player
- » Eco Mode
- » Electric Mirror
- » Fog Lights
- » Keyless entry
- » Multi-function steerin...
- » Power Steering
- » Power Window
- » PWR Mode
- » Rear Wiper

Body Style
4 door, Hatchback

Odometer
94,000 km

Engine
1300 cc, Hybrid

Fuel Type
Hybrid

Transmission
Automatic, Front Wheel

Wheels
15", Hubcap

VIN
7AT08G2YX23000913

Interior
Beige, Plastic

Safety



Based on 2023 VSRR rating

Reg No.
-

Ext Colour
Red

History
Ex-Overseas

Seats
5 seats, Cloth

CO2 Emissions
★★★★☆
114 grams/km

Energy Economy
★★★★☆☆

Annual fuel cost of \$1,920
4.9L per 100km

Cost per year is an estimate based on petrol price of \$2.80 per litre and an average distance of 14000 km. Emissions and Energy Economy figures standardised to 3P WLTP.

Stock ID: 13869



AJ Motors Sockburn | Phone 0800 566 789 | Email sockburn@ajmotors.co.nz
466 Blenheim Road, Sockburn, Christchurch 8042, New Zealand
www.ajmotors.co.nz