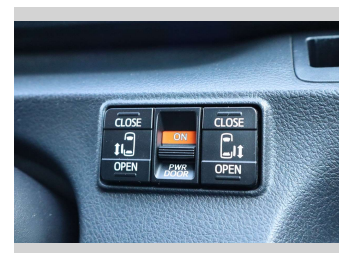
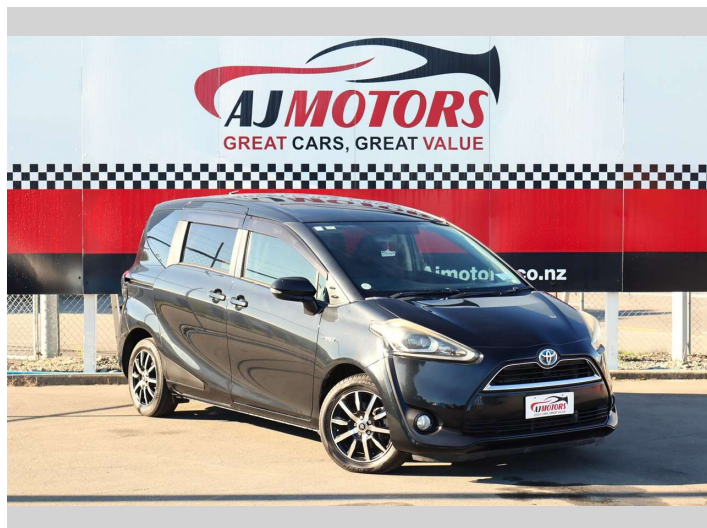


2016 Toyota Sienta 1.5L Petrol Hybrid / 7 Seats /



Purchase Price **\$15,980**
Includes GST
Excludes on-road costs of \$695

Finance may be available on this vehicle. Ask one of our friendly staff for more information.



Gain peace of mind with Mechanical Breakdown Insurance. **Ask us how.**



- Top features**
- » ABS
 - » Auto air-condition
 - » Auto headlight
 - » Bluetooth
 - » Eco Mode
 - » Electronic stability c...
 - » EV mode
 - » Fog Lights
 - » Power Sliding Door
 - » Push button start
 - » Reversing Camera
 - » Smart key system with...
 - » Traction control

Body Style
4 door, Hatchback

Odometer
128,500 km

Engine
1500 cc, Hybrid

Fuel Type
Petrol

Transmission
Automatic, 2WD

Wheels
15"

VIN
7AT0H64YX26052683

Interior
Black

Safety



Based on 2025 VSRR rating

Reg No.

-

Ext Colour
Black

History
Ex-Overseas

Seats
7 seats

CO2 Emissions
★★★★☆
107 grams/km

Energy Economy
★★★★☆

Annual fuel cost of \$1,800
4.6L per 100km

Cost per year is an estimate based on petrol price of \$2.80 per litre and an average distance of 14000 km. Emissions and Energy Economy figures standardised to 3P WLTP.

Stock ID: 32291



AJ Motors Christchurch City | Phone 0800 566 789 | Email sockburn@ajmotors.co.nz
393 Ferry Road, Woolston, Christchurch 8023, New Zealand
www.ajmotors.co.nz