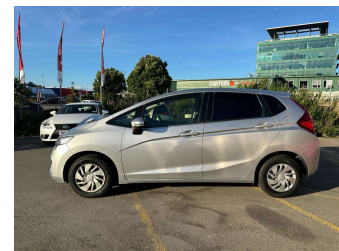



2016 Honda Fit 1.3L Low KMs Cruise Control




Purchase Price **\$15,980**

Includes GST
Excludes on-road costs of \$695

Finance may be available on this vehicle. Ask one of our friendly staff for more information.



Gain peace of mind with Mechanical Breakdown Insurance. **Ask us how.**



Top features

- » Auto headlight
- » Cruise control
- » CTBA
- » Eco Mode
- » Electric Mirrors (Retr...
- » POLE Auto
- » Push button start
- » Reversing Camera
- » Smart key system with...
- » Sport mode

Body Style
5 door, Hatchback

Odometer
43,800 km

Engine
1300 cc, Internal Combustion

Fuel Type
Petrol


Transmission
CVT

Wheels
14", Hubcap

VIN
7AT08G2YX25211520

Interior
Black, Plastic

Safety



Based on 2025 UCSR rating for 14-20 models

Reg No.
RDB205

Ext Colour
Silver

History
Ex-Overseas

Seats
5 seats, Fabric

CO2 Emissions
★★★★☆

116 grams/km

Energy Economy
★★★★☆☆

**Annual fuel cost of \$1,960
5L per 100km**

Cost per year is an estimate based on petrol price of \$2.80 per litre and an average distance of 14000 km. Emissions and Energy Economy figures standardised to 3P WLTP.

Stock ID: 36134



AJ Motors Wellington | Phone 0800 566 789 | Email kim@ajmotors.co.nz
35 Annie Huggan Grove, Petone, Lower Hutt 5012, New Zealand
www.ajmotors.co.nz