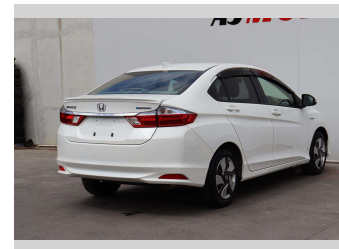
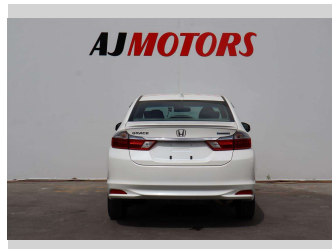
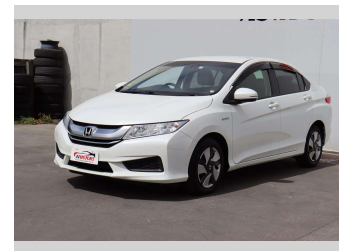



# 2016 Honda Grace Hybrid



**Purchase Price** **\$14,488**

Includes GST  
Excludes on-road costs of \$695

Finance may be available on this vehicle. Ask one of our friendly staff for more information.



Gain peace of mind with Mechanical Breakdown Insurance. **Ask us how.**



**Top features**

- » Auto air-condition
- » Bluetooth
- » Eco Mode
- » Electric Mirrors (Retr...
- » Keyless entry
- » Multi-function steerin...
- » Power Steering
- » Push button start
- » Smart key system with...
- » Wheel Covers

**Body Style**  
4 door, Sedan

**Odometer**  
61,779 km

**Engine**  
1500 cc, Internal Combustion

**Fuel Type**  
#91 Petrol


**Transmission**  
automatic, Front Wheel

**Wheels**  
15", Hubcap

**VIN**  
7AT08GEDX23102566

**Interior**  
Black, Plastic

**Safety**



Based on 2023 VSRR rating

**Reg No.**  
-

**Ext Colour**  
White

**History**  
Ex-Overseas

**Seats**  
5 seats, Cloth

**CO2 Emissions**  
★★★★☆  
90 grams/km

**Energy Economy**  
★★★★☆  
Annual fuel cost of \$1,490  
3.8L per 100km

Cost per year is an estimate based on petrol price of \$2.80 per litre and an average distance of 14000 km. Emissions and Energy Economy figures standardised to 3P WLTP.

**Stock ID: 16061**



AJ Motors Sockburn | Phone 0800 566 789 | Email sockburn@ajmotors.co.nz  
466 Blenheim Road, Sockburn, Christchurch 8042, New Zealand  
www.ajmotors.co.nz