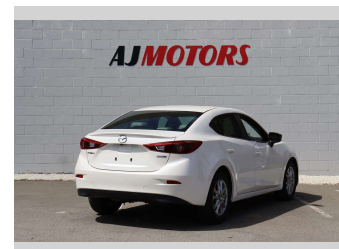


2013 Mazda Axela HYBRID S L-PKG



Purchase Price

\$14,987

Includes GST
Excludes on-road costs of \$695

Finance may be available on this vehicle. Ask one of our friendly staff for more information.

finance
NOW

Gain peace of mind with Mechanical Breakdown Insurance. **Ask us how.**

autosure
INSURANCE

Top features

- » ABS
- » Auto air-condition
- » Auto headlight
- » Bluetooth
- » Central Locking
- » Cruise control
- » electric seats
- » EV mode
- » Fog Lights
- » Heated Seats
- » Push button start
- » Rain-sensing Wipers
- » Rear Vehicle Monitorin...
- » Reversing Camera
- » Smart key system with...
- » Traction control

Body Style

4 door, Sedan

Odometer

80,900 km

Engine

2000 cc, Hybrid

Fuel Type

Hybrid

Transmission

Automatic, 2WD

Wheels

16", Factory Alloys

VIN

7AT0C13JX24100404

Interior

Black

Safety



Based on 2024 UCSR rating for 13-19 models

Reg No.

-

Ext Colour

White

History

Ex-Overseas

Seats

5 seats

CO2 Emissions

★★★★☆

97 grams/km

Energy Economy

★★★★☆

Annual fuel cost of \$1,610

4.1L per 100km

Cost per year is an estimate based on petrol price of \$2.80 per litre and an average distance of 14000 km. Emissions and Energy Economy figures standardised to 3P WLTP.

Stock ID: 23782



AJ Motors Christchurch City | Phone 0800 566 789 | Email sockburn@ajmotors.co.nz
393 Ferry Road, Woolston, Christchurch 8023, New Zealand
www.ajmotors.co.nz