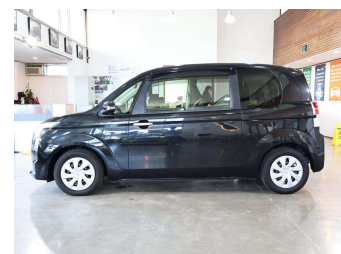
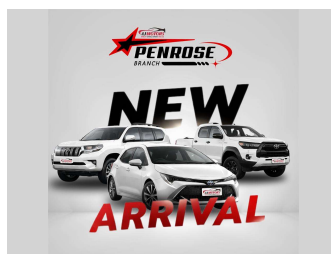


2013 Toyota Spade Y



Purchase Price **\$11,980**

Includes GST
Excludes on-road costs of \$695

Finance may be available on this vehicle. Ask one of our friendly staff for more information.



Gain peace of mind with Mechanical Breakdown Insurance. **Ask us how.**



Top features

None Listed

Body Style
4 door, Hatchback

Odometer
2,400 km

Engine
1500 cc, Internal Combustion

Fuel Type
Petrol


Transmission
Automatic, Front Wheel

Wheels
15", Steel Wheels

VIN
7AT0H662X26090545

Interior
Black and Brown, Plastic

Safety



Based on 2025 VSRR rating

Reg No.
-

Ext Colour
Black

History
Ex-Overseas

Seats
5 seats, Fabric

CO2 Emissions
★★★★☆
134 grams/km

Energy Economy
★★★★☆☆
Annual fuel cost of \$2,270
5.8L per 100km

Cost per year is an estimate based on petrol price of \$2.80 per litre and an average distance of 14000 km. Emissions and Energy Economy figures standardised to 3P WLTP.

Stock ID: 33851



AJ Motors Wellington | Phone 0800 566 789 | Email kim@ajmotors.co.nz
35 Annie Huggan Grove, Petone, Lower Hutt 5012, New Zealand
www.ajmotors.co.nz