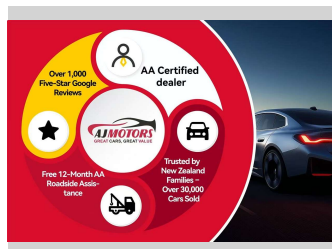
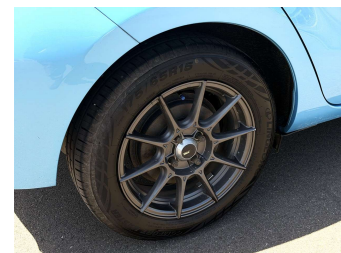


2013 Toyota Aqua S Hybrid / Push Start / Bluetooth



Purchase Price

\$12,980

Includes GST
Excludes on-road costs of \$295

Finance may be available on this vehicle. Ask one of our friendly staff for more information.

finance NOW

Gain peace of mind with Mechanical Breakdown Insurance. **Ask us how.**

autosure
INSURANCE

Top features

- » ABS
- » ABS Braking
- » Air Conditioning
- » Auto air-condition
- » Auto headlight
- » Bluetooth
- » Central Locking
- » Eco Mode
- » EV mode
- » Fog Lights
- » HYBRID SYNERGY DRIVE
- » Power Steering
- » Power Window
- » Push button start
- » Rear Wiper
- » Reversing Camera
- » Smart key system with...
- » Start-stop system

Body Style
4 door, Hatchback

Odometer
46,500 km

Engine
1500 cc, Hybrid

Fuel Type
Petrol

Transmission
Automatic, Front Wheel

Wheels
15"

VIN
7AT0H65YX22188274

Interior
beige and black

Safety



Based on 2025 UCSR rating for 12-20 models

Reg No.
PUC525

Ext Colour
LIGHTBLUE

History
Ex-Overseas

Seats
5 seats, Cloth

CO2 Emissions
★★★★☆
86 grams/km

Energy Economy
★★★★☆

Annual fuel cost of \$1,410
3.6L per 100km

Cost per year is an estimate based on petrol price of \$2.80 per litre and an average distance of 14000 km. Emissions and Energy Economy figures standardised to 3P WLTP.

Stock ID: 32995



AJ Motors Christchurch City | Phone 0800 566 789 | Email sockburn@ajmotors.co.nz
393 Ferry Road, Woolston, Christchurch 8023, New Zealand
www.ajmotors.co.nz