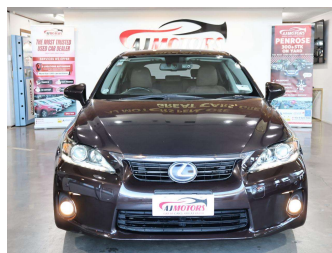



# 2013 Lexus CT200H VERSION C



**Purchase Price** **POA**  
Includes GST, Registration & Licensing

Finance may be available on this vehicle. Ask one of our friendly staff for more information.



Gain peace of mind with Mechanical Breakdown Insurance. **Ask us how.**



**Top features**  
None Listed

**Body Style**  
5 door, Hatchback

**Odometer**  
113,399 km

**Engine**  
1800 cc, Hybrid


**Fuel Type**  
Hybrid

**Transmission**  
Automatic, Front Wheel

**Wheels**  
16", Factory Alloys

**VIN**  
7AT0B010X26158405

**Interior**  
Black and Brown, Plastic

**Safety**  
  
Based on 2025 VSRR rating

**Reg No.**  
-

**Ext Colour**  
Brown

**History**  
Ex-Overseas

**Seats**  
5 seats, Alcantara

**CO2 Emissions**  
★★★★☆  
109 grams/km

**Energy Economy**  
★★★★☆☆  
Annual fuel cost of \$1,840  
4.7L per 100km

Cost per year is an estimate based on petrol price of \$2.80 per litre and an average distance of 14000 km. Emissions and Energy Economy figures standardised to 3P WLTP.

**Stock ID: 35862**



AJ Motors Penrose | Phone 0800 566 789 | Email penrose@ajmotors.co.nz  
695 Great South Road, Penrose, Auckland 1061, New Zealand  
www.ajmotors.co.nz