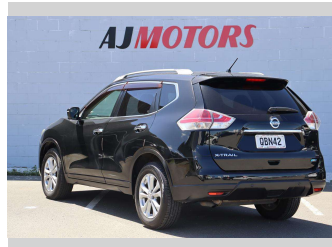



2014 Nissan X-Trail Cruise control



Purchase Price **\$13,988**
Includes GST
 Excludes on-road costs of \$695

Finance may be available on this vehicle. Ask one of our friendly staff for more information.



Gain peace of mind with Mechanical Breakdown Insurance. **Ask us how.**



- Top features**
- » Air Conditioning
 - » Alloy Wheels
 - » Auto air-condition
 - » Auto headlight
 - » Auto Start Stop
 - » Bird view
 - » Bluetooth
 - » Cruise control
 - » Dual air-condition
 - » Eco Mode
 - » Electric Mirror
 - » Fog Lights
 - » Heated Seats
 - » Inside rear view mirror
 - » Keyless entry
 - » Lane Departure Warning
 - » Multi-function steering wheel
 - » Parking Sensors

Body Style
4 door, RV/SUV

Odometer
150,200 km

Engine
2000 cc, Internal Combustion

Fuel Type
#91 Petrol


Transmission
Automatic, Front Wheel

Wheels
17", Factory Alloys

VIN
7AT0DH6LX23001273

Interior
Black, Plastic

Safety



Based on 2023 UCSR rating for 14-21 models

Reg No.
QBN42

Ext Colour
Black

History
 -

Seats
5 seats, Leather Accented

CO2 Emissions
 ★★★★★☆
162 grams/km

Energy Economy
 ★★☆☆☆☆
Annual fuel cost of \$2,700
6.9L per 100km

Cost per year is an estimate based on petrol price of \$2.80 per litre and an average distance of 14000 km. Emissions and Energy Economy figures standardised to 3P WLTP.

Stock ID: 17569



AJ Motors Sockburn | Phone 0800 566 789 | Email sockburn@ajmotors.co.nz
 466 Blenheim Road, Sockburn, Christchurch 8042, New Zealand
 www.ajmotors.co.nz