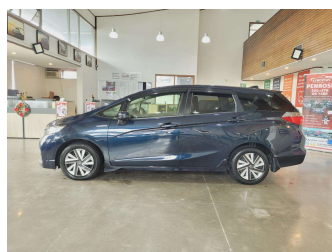


2016 Honda Shuttle HV X STYLE EDN



Purchase Price

\$12,980

Includes GST
Excludes on-road costs of \$695

Finance may be available on this vehicle. Ask one of our friendly staff for more information.

**finance
NOW**

Gain peace of mind with Mechanical Breakdown Insurance. **Ask us how.**

autosure
INSURANCE

Top features

- » ABS
- » Air Conditioning
- » Bluetooth
- » Central Locking
- » Child seat anchor poin...
- » Cruise control
- » Eco Mode
- » Electric Mirrors (Retr...
- » Fog Lights
- » Multi-function steerin...
- » Power window
- » Pre crush safety
- » Push button start
- » Rear Wiper
- » Reversing Camera
- » Smart key system with...
- » Storage - Centre conso...
- » Traction control

Body Style

5 door, Station Wagon

Odometer

112,000 km

Engine

1500 cc, Hybrid

Fuel Type

Electricity

Transmission

Automatic, Front Wheel

Wheels

15", Steel Wheels

VIN

7AT08G1XX25028519

Interior

Black, Plastic

Safety



Based on 2025 VSRR rating

Reg No.

-

Ext Colour

NAVYBLUE

History

Ex-Overseas

Seats

5 seats, Fabric

CO2 Emissions

★★★★☆

95 grams/km

Energy Economy

★★★★☆☆

**Annual fuel cost of \$1,570
4L per 100km**

Cost per year is an estimate based on petrol price of \$2.80 per litre and an average distance of 14000 km. Emissions and Energy Economy figures standardised to 3P WLTP.

Stock ID: 31053



AJ Motors Wellington | Phone 0800 566 789 | Email kim@ajmotors.co.nz
35 Annie Huggan Grove, Petone, Lower Hutt 5012, New Zealand
www.ajmotors.co.nz