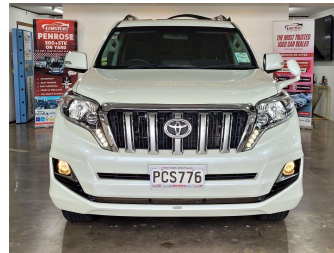


2016 Toyota LANDCRUISER PRADO



Purchase Price

Includes GST, Registration & Licensing

POA

Finance may be available on this vehicle. Ask one of our friendly staff for more information.

finance
NOW

Gain peace of mind with Mechanical Breakdown Insurance. **Ask us how.**

autosure
INSURANCE

Top features

- » ABS
- » Air Conditioning
- » Alloy Wheels
- » Apple CarPlay/Android
- » Bluetooth
- » Body Kit (Factory)
- » Central Locking
- » Child seat anchor point
- » Cruise control
- » Dual Climate Control
- » Eco Mode
- » Electric Mirrors (Retractable)
- » Fog Lights
- » Multi-function steering wheel
- » Power window
- » Push button start
- » Rear Wiper
- » Reversing Camera

Body Style

5 door, RV/SUV

Odometer

93,385 km

Engine

2754 cc, Internal Combustion

Fuel Type

Diesel

Transmission

Automatic, 4WD

Wheels

17", Factory Alloys

VIN

7AT0H60HX22015167

Interior

Black, Plastic

Safety



Based on 2025 UCSR rating for 09-23 models

Reg No.

PCS776

Ext Colour

White

History

Ex-Overseas

Seats

5 seats, Fabric

CO2 Emissions

★ ★ ☆ ☆ ☆ ☆

240 grams/km

Energy Economy

★ ★ ☆ ☆ ☆ ☆

**Annual fuel cost of \$3,670
9.3L per 100km**

Cost per year is an estimate based on diesel price of \$2.00 per litre and an average distance of 14000 km. Includes Road User Charges (RUC). Emissions and Energy Economy figures standardised to 3P WLTP.

Stock ID: 32846



AJ Motors Penrose | Phone 0800 566 789 | Email penrose@ajmotors.co.nz
695 Great South Road, Penrose, Auckland 1061, New Zealand
www.ajmotors.co.nz