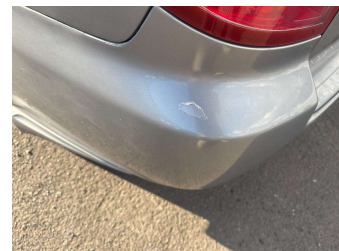
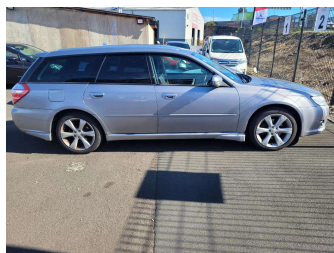
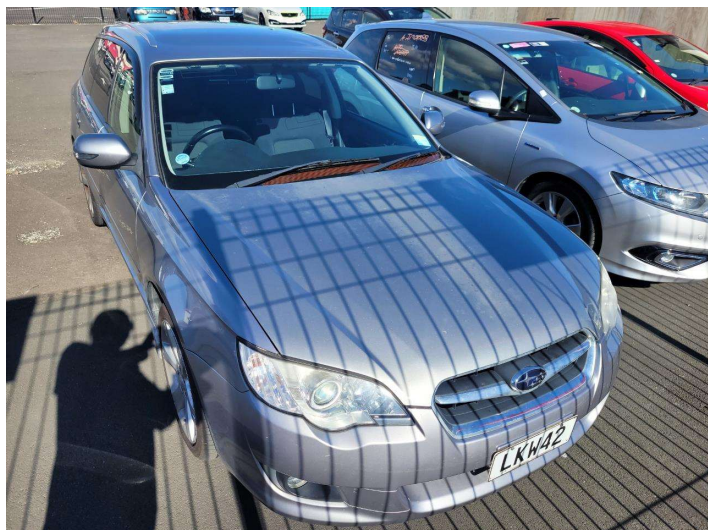



2009 Subaru Legacy




Purchase Price **POA**
Includes GST, Registration & Licensing


Finance may be available on this vehicle. Ask one of our friendly staff for more information.



Gain peace of mind with Mechanical Breakdown Insurance. **Ask us how.**



Top features
None Listed

- Body Style -
 - Odometer -
 - Engine -
 - Fuel Type -
 - Transmission -
 - Wheels -
 - VIN -
 - Interior -
 - Safety 
- Based on 2025 UCSR rating for 03-09 models

- Reg No. **LKW42**
- Ext Colour -
- History -
- Seats -
- CO2 Emissions **★ ★ ★ ☆ ☆ ☆**
213 grams/km
- Energy Economy **★ ☆ ☆ ☆ ☆ ☆**
Annual fuel cost of \$3,490
8.9L per 100km
- Cost per year is an estimate based on petrol price of \$2.80 per litre and an average distance of 14000 km. Emissions and Energy Economy figures standardised to 3P WLTP.
- Stock ID: 35313**



AJ Motors Penrose | Phone 0800 566 789 | Email penrose@ajmotors.co.nz
695 Great South Road, Penrose, Auckland 1061, New Zealand
www.ajmotors.co.nz