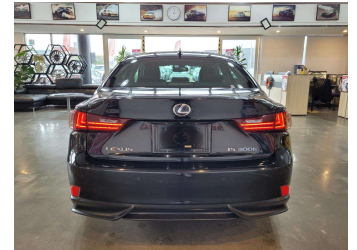


2015 Lexus IS 300h Version L



Purchase Price **\$20,980**

Includes GST
Excludes on-road costs of \$695

Finance may be available on this vehicle. Ask one of our friendly staff for more information.



Gain peace of mind with Mechanical Breakdown Insurance. **Ask us how.**



Top features

- » ABS
- » Alloy Wheels
- » Bose Speakers
- » Central Locking
- » Child seat anchor poin...
- » Cruise control
- » Dual Climate Control
- » Eco Mode
- » Electric Mirrors (Retr...
- » EV mode
- » Fog Lights
- » Headlights - LED with...
- » Heated Seats
- » Multi-function steerin...
- » Paddle Gear Shifters
- » Power window
- » Pre crush safety
- » Push button start

Body Style
4 door, Sedan

Odometer
130,630 km

Engine
2500 cc, Hybrid

Fuel Type
Petrol


Transmission
Automatic, Front Wheel

Wheels
17", Factory Alloys

VIN
7AT0B00AX25041674

Interior
Black, Plastic

Safety



Based on 2025 VSRR rating

Reg No.
-

Ext Colour
Black

History
Ex-Overseas

Seats
5 seats, Leather

CO2 Emissions
★★★★☆
122 grams/km

Energy Economy
★★★★☆☆
Annual fuel cost of \$2,040
5.2L per 100km

Cost per year is an estimate based on petrol price of \$2.80 per litre and an average distance of 14000 km. Emissions and Energy Economy figures standardised to 3P WLTP.

Stock ID: 31605



AJ Motors Wellington | Phone 0800 566 789 | Email kim@ajmotors.co.nz
35 Annie Huggan Grove, Petone, Lower Hutt 5012, New Zealand
www.ajmotors.co.nz