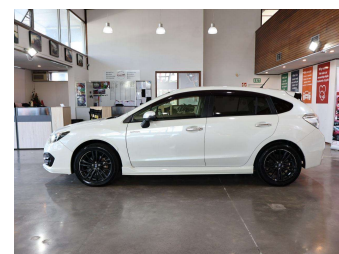
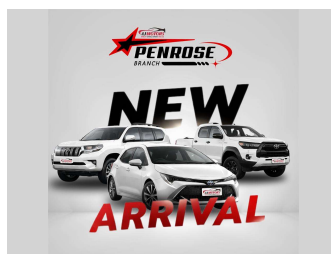
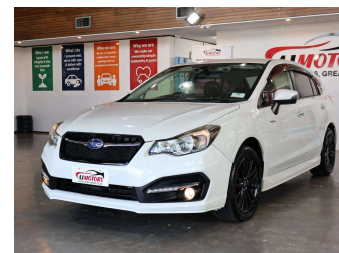



2015 Subaru Impreza 2.0L AWD Eyesight



Purchase Price **POA**
Includes GST, Registration & Licensing

Finance may be available on this vehicle. Ask one of our friendly staff for more information.



Gain peace of mind with Mechanical Breakdown Insurance. **Ask us how.**



Top features
None Listed

Body Style
5 door, Hatchback

Odometer
104,892 km

Engine
2000 cc, Internal Combustion


Fuel Type
Petrol

Transmission
Automatic, Front Wheel

Wheels
17", Factory Alloys

VIN
7AT0GF09X26024396

Interior
Black, Plastic

Safety

Based on 2025 UCSR rating for 12-16 models

Reg No.
-

Ext Colour
Pearl

History
Ex-Overseas

Seats
5 seats, Leather

CO2 Emissions
★★★★☆
135 grams/km

Energy Economy
★★★★☆☆
Annual fuel cost of \$2,270
5.8L per 100km

Cost per year is an estimate based on petrol price of \$2.80 per litre and an average distance of 14000 km. Emissions and Energy Economy figures standardised to 3P WLTP.

Stock ID: 33628



AJ Motors Penrose | Phone 0800 566 789 | Email penrose@ajmotors.co.nz
695 Great South Road, Penrose, Auckland 1061, New Zealand
www.ajmotors.co.nz