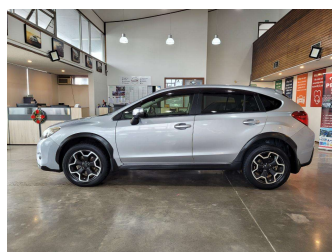
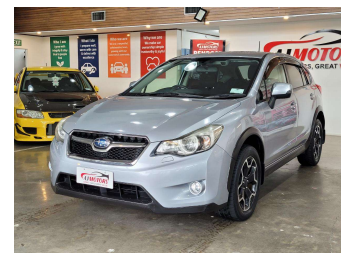


# 2012 Subaru Impreza XV 4WD 2.0I-L EYESIGHT



## Purchase Price

**\$11,980**

Includes GST  
Excludes on-road costs of \$695

Finance may be available on this vehicle. Ask one of our friendly staff for more information.

**finance  
NOW**

Gain peace of mind with Mechanical Breakdown Insurance. **Ask us how.**

**autosure**  
INSURANCE

## Top features

- » ABS
- » Air Conditioning
- » Alloy Wheels
- » Bluetooth
- » Central Locking
- » Child seat anchor poin...
- » Cruise control
- » Dual Climate Control
- » Eco Mode
- » Electric Mirrors (Retr...
- » Eyesight
- » Fog Lights
- » Headlights - LED with...
- » Lane Departure Warning
- » Multi-function steerin...
- » Paddle Gear Shifters
- » Power window
- » Pre crush safety

Body Style

**5 door, RV/SUV**

Odometer

**113,000 km**

Engine

**2000 cc, Internal Combustion**

Fuel Type

**Petrol**

Transmission

**Automatic, 4WD**

Wheels

**17", Factory Alloys**

VIN

**7AT0GF1XX25021259**

Interior

**Black, Plastic**

Safety



Based on 2025 UCSR rating for 12-16 models

Reg No.

-

Ext Colour

**Silver**

History

**Ex-Overseas**

Seats

**5 seats, Fabric**

CO2 Emissions

★★★★☆

**167 grams/km**

Energy Economy

★★☆☆☆☆

**Annual fuel cost of \$2,780  
7.1L per 100km**

Cost per year is an estimate based on petrol price of \$2.80 per litre and an average distance of 14000 km. Emissions and Energy Economy figures standardised to 3P WLTP.

**Stock ID: 31922**



AJ Motors Wellington | Phone 0800 566 789 | Email kim@ajmotors.co.nz  
35 Annie Huggan Grove, Petone, Lower Hutt 5012, New Zealand  
www.ajmotors.co.nz