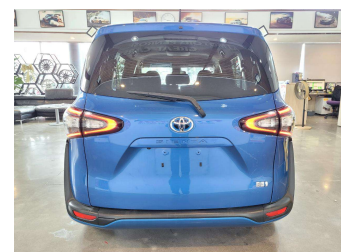
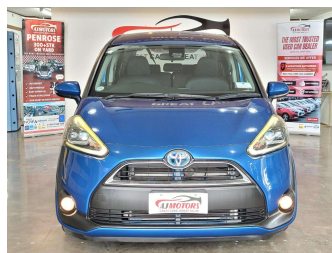


2016 Toyota Sienta HYBRID G



Purchase Price

\$15,980

Includes GST
Excludes on-road costs of \$695

Finance may be available on this vehicle. Ask one of our friendly staff for more information.

**finance
NOW**

Gain peace of mind with Mechanical Breakdown Insurance. **Ask us how.**

autosure
INSURANCE

Top features

- » ABS
- » Air Conditioning
- » Bluetooth
- » Central Locking
- » Child seat anchor poin...
- » Eco Mode
- » Electric Mirrors (Retr...
- » EV mode
- » Fog Lights
- » Lane Departure Warning
- » Multi-function steerin...
- » Power Sliding Door
- » Power window
- » Pre crush safety
- » Push button start
- » Rear Wiper
- » Reversing Camera
- » Smart key system with...

Body Style

5 door, Station Wagon

Odometer

112,000 km

Engine

1500 cc, Hybrid

Fuel Type

Electricity

Transmission

Automatic, Front Wheel

Wheels

15", Steel Wheels

VIN

7AT0H64YX25037388

Interior

Black, Plastic

Safety



Based on 2025 VSRR rating

Reg No.

-

Ext Colour

Blue

History

Ex-Overseas

Seats

7 seats, Fabric

CO2 Emissions

★★★★☆

107 grams/km

Energy Economy

★★★★☆☆

Annual fuel cost of \$1,800

4.6L per 100km

Cost per year is an estimate based on petrol price of \$2.80 per litre and an average distance of 14000 km. Emissions and Energy Economy figures standardised to 3P WLTP.

Stock ID: 30946



AJ Motors Wellington | Phone 0800 566 789 | Email kim@ajmotors.co.nz
35 Annie Huggan Grove, Petone, Lower Hutt 5012, New Zealand
www.ajmotors.co.nz