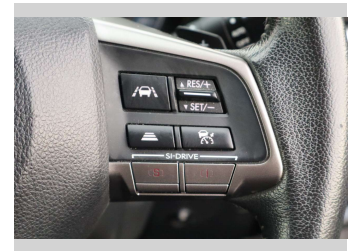
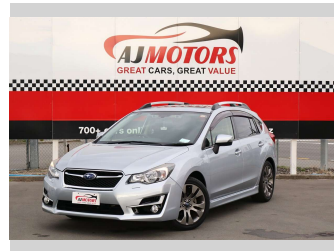


2015 Subaru Impreza 2.0L AWD Eyesight



Purchase Price
Includes GST
Excludes on-road costs of \$695

\$11,980

Finance may be available on this vehicle. Ask one of our friendly staff for more information.



Gain peace of mind with Mechanical Breakdown Insurance. **Ask us how.**



Top features

- » ABS
- » Adaptive Cruise Control
- » All auto windows
- » Apple CarPlay
- » Auto air-condition
- » Auto headlight
- » Auto Start Stop
- » Bluetooth
- » Electronic stability control
- » Fog Lights
- » Lane Keeping
- » Paddle Gear Shift
- » Power Seat Adjustment
- » Push button start
- » Rain-sensing Wipers
- » Rear Wiper
- » Traction control

Body Style
4 door, Hatchback

Odometer
120,050 km

Engine
2000 cc, Internal Combustion

Fuel Type
Petrol

Transmission
Automatic, AWD

Wheels
17"

VIN
7AT0GF09X26083383

Interior
Black

Safety



Based on 2025 UCSR rating for 12-16 models

Reg No.
-

Ext Colour
Silver

History
Ex-Overseas

Seats
5 seats

CO2 Emissions
★★★★☆
163 grams/km

Energy Economy
★★★★☆☆

Annual fuel cost of \$2,740
7L per 100km

Cost per year is an estimate based on petrol price of \$2.80 per litre and an average distance of 14000 km. Emissions and Energy Economy figures standardised to 3P WLTP.

Stock ID: 33489



AJ Motors Christchurch City | Phone 0800 566 789 | Email sockburn@ajmotors.co.nz
393 Ferry Road, Woolston, Christchurch 8023, New Zealand
www.ajmotors.co.nz