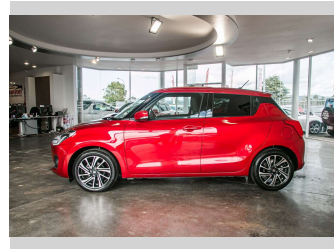


# 2023 Suzuki Swift RS 1.0PT/6AT



## Purchase Price

Includes GST, Registration & Licensing

# POA

Finance may be available on this vehicle. Ask one of our friendly staff for more information.

Gain peace of mind with Mechanical Breakdown Insurance. **Ask us how.**

## Top features

None Listed

Body Style

**Hatchback**

Odometer

**62,300 km**

Engine

**1000 cc, Internal Combustion**

Fuel Type

**Petrol**

Transmission

**Automatic, 2WD**

Wheels

-

VIN

**JSAAZC13S00403526**

Interior

-

Safety



Based on 2025 UCSR rating for 17-23 models

Reg No.

**QHU335**

Ext Colour

**Red**

History

**NZ New**

Seats

**5 seats**

CO2 Emissions

★★★★☆

**132 grams/km**

Energy Economy

★★★★☆☆

**Annual fuel cost of \$2,230**

**5.7L per 100km**

Cost per year is an estimate based on petrol price of \$2.80 per litre and an average distance of 14000 km. Emissions and Energy Economy figures standardised to 3P WLTP.

**Stock ID: 33994**



AJ Motors West City | Phone 0800 566 789 | Email Eric@ajmotors.co.nz  
437-441 Great North Road, Henderson, Auckland 0610, New Zealand  
www.ajmotors.co.nz