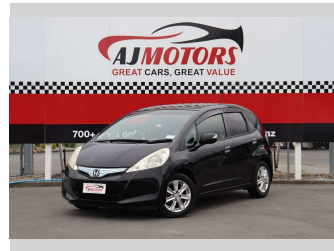


# 2011 Honda Fit HV NAVI PREMIUM



**Purchase Price** **\$7,980**

Includes GST  
Excludes on-road costs of \$295

Finance may be available on this vehicle. Ask one of our friendly staff for more information.



Gain peace of mind with Mechanical Breakdown Insurance. **Ask us how.**



**Top features**

- » Air Conditioning
- » Alloy Wheels
- » Auto headlight
- » Cruise control
- » Eco Mode
- » Electric Mirrors (Retr...
- » Heated Seats
- » Inside rear view mirro...
- » Keyless entry
- » Paddle Gear Shift
- » Power window
- » Rear Wiper
- » Reversing Camera
- » Smart key system with...

Body Style  
**5 door, Hatchback**

Odometer  
**158,600 km**

Engine  
**1339 cc, Hybrid**

Fuel Type  
**Petrol**

Transmission  
**Automatic, Front Wheel**

Wheels  
**15"**

VIN  
**7AT08G2YX22073181**

Interior  
**grey**

Safety



Based on 2025 UCSR rating for 08-14 models

Reg No.  
**PRM654**

Ext Colour  
**Black**

History  
**Ex-Overseas**

Seats  
**5 seats**

CO2 Emissions  
**★★★★☆**  
**113 grams/km**

Energy Economy  
**★★★★☆☆**

**Annual fuel cost of \$1,840**  
**4.7L per 100km**

Cost per year is an estimate based on petrol price of \$2.80 per litre and an average distance of 14000 km. Emissions and Energy Economy figures standardised to 3P WLTP.

**Stock ID: 34725**



AJ Motors Christchurch City | Phone 0800 566 789 | Email [sockburn@ajmotors.co.nz](mailto:sockburn@ajmotors.co.nz)  
393 Ferry Road, Woolston, Christchurch 8023, New Zealand  
[www.ajmotors.co.nz](http://www.ajmotors.co.nz)