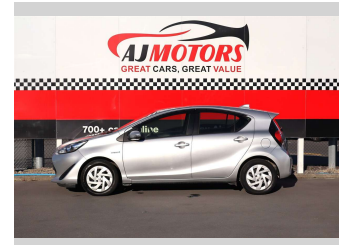
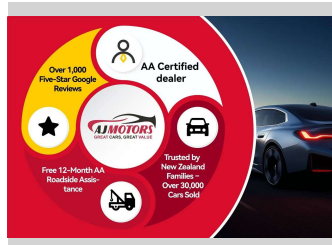
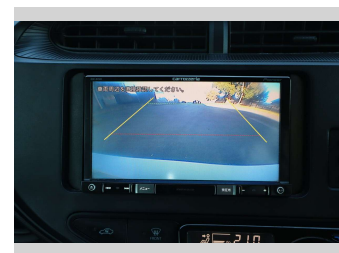
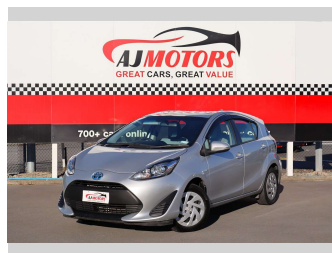



# 2017 Toyota Aqua 1.5L Petrol Hybrid




**Purchase Price** **\$7,980**

Includes GST  
Excludes on-road costs of \$295

Finance may be available on this vehicle. Ask one of our friendly staff for more information.



Gain peace of mind with Mechanical Breakdown Insurance. **Ask us how.**



**Top features**

- » ABS
- » Auto air-condition
- » Eco Mode
- » Electronic stability control (ESC)
- » EV mode
- » Rear Wiper
- » Reversing Camera
- » Traction control

Body Style  
**4 door, Hatchback**

Odometer  
**171,600 km**

Engine  
**1500 cc, Hybrid**

Fuel Type  
**Petrol**

Transmission  
**Automatic, 2WD**

Wheels  
**15"**

VIN  
**7AT0H65YX23618089**

Interior  
**Black**

Safety



Based on 2024 UCSR rating for 12-20 models

Reg No.  
**QJC282**

Ext Colour  
**Silver**

History  
**Ex-Overseas**

Seats  
**5 seats**

CO2 Emissions  
**★★★★☆**  
**84 grams/km**

Energy Economy  
**★★★★☆**

**Annual fuel cost of \$1,370**  
**3.5L per 100km**

Cost per year is an estimate based on petrol price of \$2.80 per litre and an average distance of 14000 km. Emissions and Energy Economy figures standardised to 3P WLTP.

**Stock ID: 17177**



AJ Motors Christchurch City | Phone 0800 566 789 | Email [sockburn@ajmotors.co.nz](mailto:sockburn@ajmotors.co.nz)  
393 Ferry Road, Woolston, Christchurch 8023, New Zealand  
[www.ajmotors.co.nz](http://www.ajmotors.co.nz)