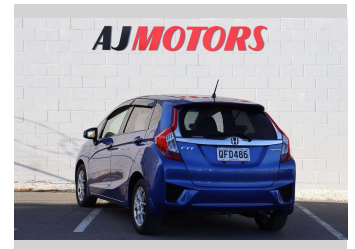
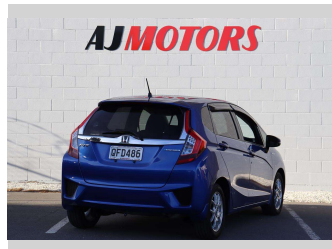
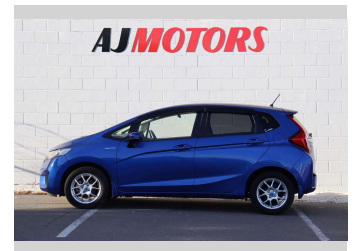



2013 Honda Fit HYBRID F PACKAGE




Purchase Price **\$11,980**

Includes GST
Excludes on-road costs of \$695

Finance may be available on this vehicle. Ask one of our friendly staff for more information.



Gain peace of mind with Mechanical Breakdown Insurance. **Ask us how.**



Top features

- » ABS
- » ABS Braking
- » Alloy Wheels
- » Auto air-condition
- » Auto headlight
- » Auto Start Stop
- » Bluetooth
- » Central Locking
- » Central Locking
- » Electric Mirrors (Retr...
- » Keyless entry
- » Multi-function steerin...
- » Power Steering
- » Power Window
- » Push button start
- » Rear Wiper
- » Reversing Camera
- » Spoiler

Body Style
4 door, Hatchback

Odometer
95,300 km

Engine
1500 cc, Hybrid

Fuel Type
Hybrid

Transmission
automatic, Front Wheel

Wheels
15", Custom Alloys

VIN
7AT08G2YX23032691

Interior
Black, Plastic

Safety



Based on 2023 UCSR rating for 14-20 models

Reg No.
QFD486

Ext Colour
Blue

History
Ex-Overseas

Seats
5 seats, Cloth

CO2 Emissions
★★★★☆
92 grams/km

Energy Economy
★★★★☆

Annual fuel cost of \$1,530
3.9L per 100km

Cost per year is an estimate based on petrol price of \$2.80 per litre and an average distance of 14000 km. Emissions and Energy Economy figures standardised to 3P WLTP.

Stock ID: 20172



AJ Motors Sockburn | Phone 0800 566 789 | Email sockburn@ajmotors.co.nz
466 Blenheim Road, Sockburn, Christchurch 8042, New Zealand
www.ajmotors.co.nz