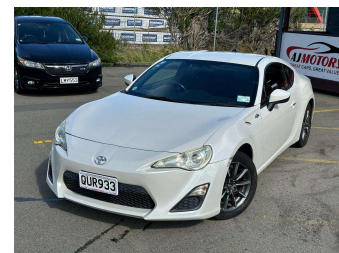



# 2012 Toyota 86 G



**Purchase Price** **\$23,980**

Includes GST  
Excludes on-road costs of \$695

Finance may be available on this vehicle. Ask one of our friendly staff for more information.



Gain peace of mind with Mechanical Breakdown Insurance. **Ask us how.**



**Top features**

None Listed

**Body Style**  
2 door, Coupe

**Odometer**  
98,250 km

**Engine**  
1998 cc, Internal Combustion

**Fuel Type**  
#95 Petrol


**Transmission**  
Automatic, 2WD

**Wheels**  
16", Alloy

**VIN**  
7AT0H65RX24012607

**Interior**  
Black

**Safety**



Based on 2025 VSRR rating

**Reg No.**  
QUR933

**Ext Colour**  
PEARLWHITE

**History**  
Ex-Overseas

**Seats**  
2 seats, Fabric

**CO2 Emissions**  
★★★★☆  
200 grams/km

**Energy Economy**  
★★★★☆  
**Annual fuel cost of \$3,370**  
8.6L per 100km

Cost per year is an estimate based on petrol price of \$2.80 per litre and an average distance of 14000 km. Emissions and Energy Economy figures standardised to 3P WLTP.

**Stock ID: 33400**



AJ Motors Wellington | Phone 0800 566 789 | Email kim@ajmotors.co.nz  
35 Annie Huggan Grove, Petone, Lower Hutt 5012, New Zealand  
www.ajmotors.co.nz