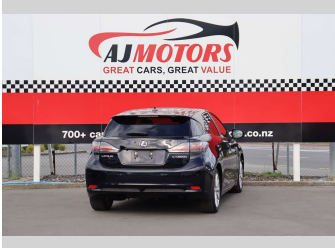
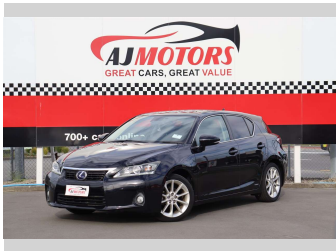


# 2012 Lexus CT200H Hybrid /Sunroof/Alloy Wheel



Purchase Price

**\$12,988**

Includes GST  
Excludes on-road costs of \$695

Finance may be available on this vehicle. Ask one of our friendly staff for more information.



Gain peace of mind with Mechanical Breakdown Insurance. **Ask us how.**



## Top features

- » ABS
- » Auto air-condition
- » Auto headlight
- » Central Locking
- » Cruise control
- » Eco Mode
- » EV mode
- » Fog Lights
- » Heated Seats
- » Paddle Gear Shift
- » Push button start
- » Rear Wiper
- » Reversing Camera
- » Smart key system with...
- » Sport mode
- » Traction control

Body Style

**4 door, Station Wagon**

Odometer

**129,300 km**

Engine

**1800 cc, Hybrid**

Fuel Type

**Electricity**

Transmission

**Automatic, 2WD**

Wheels

**17"**

VIN

**7AT0B010X25123249**

Interior

**Black**

Safety



Based on 2024 VSRR rating

Reg No.

-

Ext Colour

**Blue**

History

**Ex-Overseas**

Seats

**5 seats**

CO2 Emissions

★★★★☆

**109 grams/km**

Energy Economy

★★★★☆☆

**Annual fuel cost of \$1,840**

**4.7L per 100km**

Cost per year is an estimate based on petrol price of \$2.80 per litre and an average distance of 14000 km. Emissions and Energy Economy figures standardised to 3P WLTP.

**Stock ID: 29068**



AJ Motors Christchurch City | Phone 0800 566 789 | Email [sockburn@ajmotors.co.nz](mailto:sockburn@ajmotors.co.nz)  
393 Ferry Road, Woolston, Christchurch 8023, New Zealand  
[www.ajmotors.co.nz](http://www.ajmotors.co.nz)