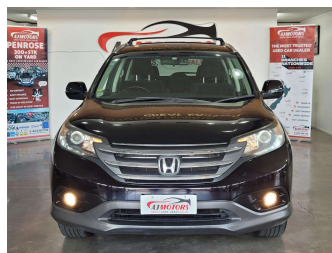



# 2012 Honda CR-V



**Purchase Price** **\$15,980**

Includes GST  
Excludes on-road costs of \$695

Finance may be available on this vehicle. Ask one of our friendly staff for more information.



Gain peace of mind with Mechanical Breakdown Insurance. **Ask us how.**



**Top features**

None Listed

Body Style  
**RV/SUV**

Odometer  
**103,440 km**

Engine  
**2000 cc**

Fuel Type  
**Petrol**

Transmission  
**CVT**

Wheels  
-

VIN  
**7AT08GFJX24001089**

Interior  
-

Safety



Based on 2024 UCSR rating for 12-17 models

Reg No.

-

Ext Colour

**Black**

History

**Ex-Overseas**

Seats

-

CO2 Emissions

★★★★☆

**181 grams/km**

Energy Economy

★★☆☆☆

**Annual fuel cost of \$3,020  
7.7L per 100km**

Cost per year is an estimate based on petrol price of \$2.80 per litre and an average distance of 14000 km. Emissions and Energy Economy figures standardised to 3P WLTP.

**Stock ID: 24897**



AJ Motors Wellington | Phone 0800 566 789 | Email kim@ajmotors.co.nz  
35 Annie Huggan Grove, Petone, Lower Hutt 5012, New Zealand  
www.ajmotors.co.nz