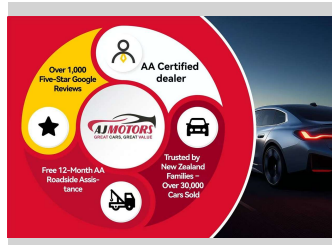
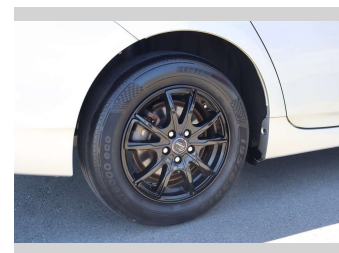



2015 Toyota Prius 1.8L Petrol Hybrid




Purchase Price **\$12,980**

Includes GST
Excludes on-road costs of \$695

Finance may be available on this vehicle. Ask one of our friendly staff for more information.



Gain peace of mind with Mechanical Breakdown Insurance. **Ask us how.**



Top features

- » ABS
- » Auto air-condition
- » Auto headlight
- » Central Locking
- » Eco Mode
- » EV mode
- » Fog Lights
- » Push button start
- » PWR Mode
- » Traction control

Body Style
4 door, Hatchback

Odometer
101,400 km

Engine
1800 cc, Hybrid

Fuel Type
Electricity

Transmission
Automatic, 2WD

Wheels
15"

VIN
7AT0H637X25932694

Interior
Black

Safety



Based on 2025 UCSR rating for 09-16 models

Reg No.

-

Ext Colour
Silver

History
Ex-Overseas

Seats
5 seats

CO2 Emissions
★★★★☆
94 grams/km

Energy Economy
★★★★☆☆

Annual fuel cost of \$1,570
4L per 100km

Cost per year is an estimate based on petrol price of \$2.80 per litre and an average distance of 14000 km. Emissions and Energy Economy figures standardised to 3P WLTP.

Stock ID: 31162



AJ Motors Christchurch City | Phone 0800 566 789 | Email sockburn@ajmotors.co.nz
393 Ferry Road, Woolston, Christchurch 8023, New Zealand
www.ajmotors.co.nz