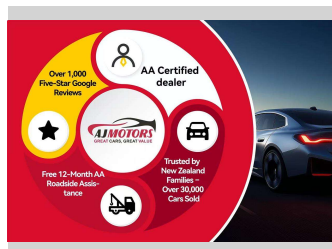
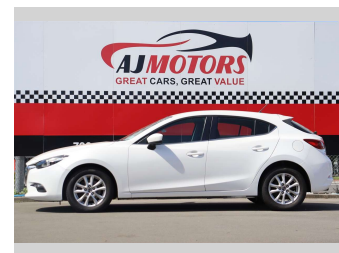


2017 Mazda Axela Mazda 3 NZ NEW



Purchase Price

\$15,980

Includes GST
Excludes on-road costs of \$295

Finance may be available on this vehicle. Ask one of our friendly staff for more information.

finance
NOW

Gain peace of mind with Mechanical Breakdown Insurance. **Ask us how.**

autosure
INSURANCE

Top features

- » ABS
- » Air Conditioning
- » Central Locking
- » Cruise control
- » Electronic Hand Brake
- » Fog Lights
- » Push button start
- » Rear Wiper
- » Reversing Camera
- » Sport mode
- » Traction control

Body Style

4 door, Hatchback

Odometer

124,250 km

Engine

2000 cc, Internal Combustion

Fuel Type

Petrol

Transmission

Automatic, 2WD

Wheels

16"

VIN

JM0BN547810145860

Interior

Black

Safety



Based on 2024 UCSR rating for 13-19 models

Reg No.

KPD303

Ext Colour

White

History

NZ New

Seats

5 seats

CO2 Emissions

★★★★★☆☆

151 grams/km

Energy Economy

★★★★☆☆☆☆

**Annual fuel cost of \$2,510
6.4L per 100km**

Cost per year is an estimate based on petrol price of \$2.80 per litre and an average distance of 14000 km. Emissions and Energy Economy figures standardised to 3P WLTP.

Stock ID: 30306



AJ Motors Christchurch City | Phone 0800 566 789 | Email sockburn@ajmotors.co.nz
393 Ferry Road, Woolston, Christchurch 8023, New Zealand
www.ajmotors.co.nz