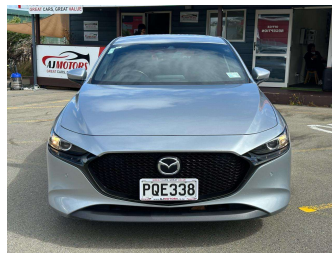



2022 Mazda 3 SP25 2.5L NZ New




Purchase Price **\$26,980**

Includes GST
Excludes on-road costs of \$695

Finance may be available on this vehicle. Ask one of our friendly staff for more information.



Gain peace of mind with Mechanical Breakdown Insurance. **Ask us how.**



Top features

None Listed

Body Style
5 door, Hatchback

Odometer
67,500 km

Engine
2488 cc, Internal Combustion

Fuel Type
Petrol


Transmission
Automatic, FWD

Wheels
Factory Alloys

VIN
JM0BP2HLA01211022

Interior
Black and Brown, Fabric

Safety



Based on 2019 ANCAP rating for 19+ models

Reg No.
PQE338

Ext Colour
Silver

History
NZ New

Seats
5 seats, Fabric

CO2 Emissions
★★★★☆
171 grams/km

Energy Economy
★★★☆☆☆
Annual fuel cost of \$2,860
7.3L per 100km

Cost per year is an estimate based on petrol price of \$2.80 per litre and an average distance of 14000 km. Emissions and Energy Economy figures standardised to 3P WLTP.

Stock ID: 32791



AJ Motors Wellington | Phone 0800 566 789 | Email kim@ajmotors.co.nz
35 Annie Huggan Grove, Petone, Lower Hutt 5012, New Zealand
www.ajmotors.co.nz