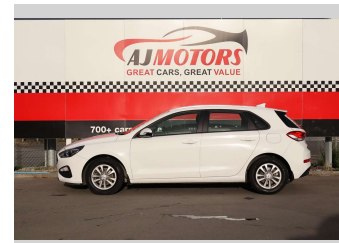
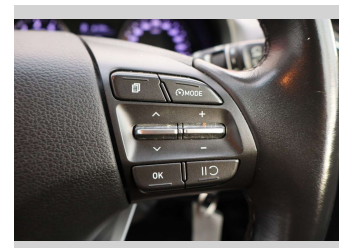


2021 Hyundai i30 PDE 1.5 Hatch 1.5P



Purchase Price **\$16,480**
Includes GST
Excludes on-road costs of \$295

Finance may be available on this vehicle. Ask one of our friendly staff for more information.



Gain peace of mind with Mechanical Breakdown Insurance. **Ask us how.**



Top features

- » ABS
- » Auto air-condition
- » Auto headlight
- » Drive Mode
- » Electronic stability c...
- » Fog Lights
- » Parking Sensors
- » Rear Wiper
- » smart key
- » Smart key system with...
- » Traction control

Body Style
4 door, RV/SUV

Odometer
108,900 km

Engine
1498 cc, Internal Combustion

Fuel Type
Petrol

Transmission
Automatic, 2WD

Wheels
15"

VIN
TMAH351CMNJ166288

Interior
Black

Safety



Based on 2025 UCSR rating for 17-23 models

Reg No.
RRH416

Ext Colour
White

History
Ex-Overseas

Seats
5 seats

CO2 Emissions
★★★★☆
167 grams/km

Energy Economy
★★★★☆☆

Annual fuel cost of \$2,780
7.1L per 100km

Cost per year is an estimate based on petrol price of \$2.80 per litre and an average distance of 14000 km. Emissions and Energy Economy figures standardised to 3P WLTP.

Stock ID: 33868



AJ Motors Christchurch City | Phone 0800 566 789 | Email sockburn@ajmotors.co.nz
393 Ferry Road, Woolston, Christchurch 8023, New Zealand
www.ajmotors.co.nz