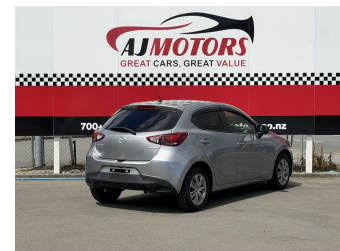
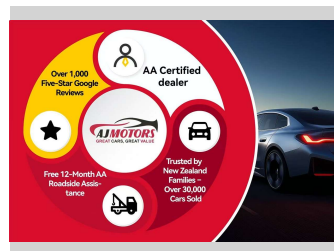
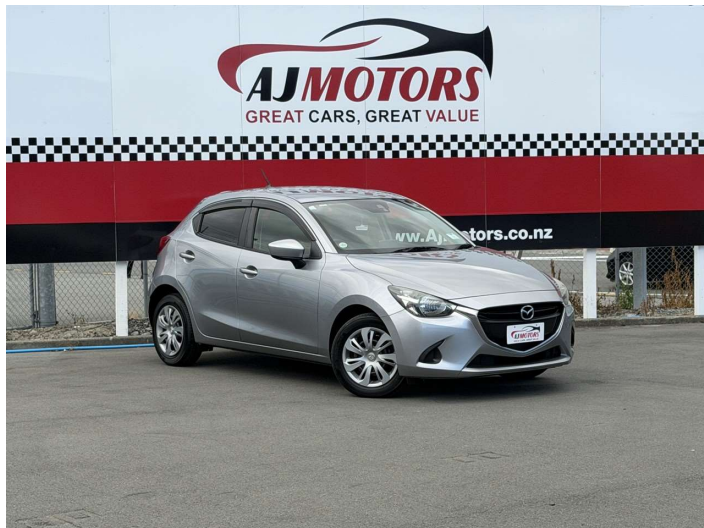


# 2015 Mazda Demio 1.3L Petrol



**Purchase Price** **POA**

Includes GST, Registration & Licensing

Finance may be available on this vehicle. Ask one of our friendly staff for more information.

**finance NOW**

Gain peace of mind with Mechanical Breakdown Insurance. **Ask us how.**

**autosure** INSURANCE

**Top features**

- » ABS
- » Air Conditioning
- » Bluetooth
- » Central Locking
- » i-Stop
- » Push button start
- » Rear Wiper
- » Reversing Camera
- » Sport mode
- » Traction control

**Body Style**  
**4 door, Hatchback**

**Odometer**  
**113,700 km**

**Engine**  
**1300 cc, Internal Combustion**

**Fuel Type**  
**Petrol**

**Transmission**  
**Automatic, 2WD**

**Wheels**  
**15"**

**VIN**  
**7AT0C12HX26125929**

**Interior**  
**Black and Blue**

**Safety**

**4 star safety rating**

Based on 2025 UCSR rating for 14-23 models

**Reg No.**  
**-**

**Ext Colour**  
**Grey**

**History**  
**Ex-Overseas**

**Seats**  
**5 seats**

**CO2 Emissions**  
**★★★★☆**

**116 grams/km**

**Energy Economy**  
**★★★★☆☆**

**Annual fuel cost of \$1,960**  
**5L per 100km**

Cost per year is an estimate based on petrol price of \$2.80 per litre and an average distance of 14000 km. Emissions and Energy Economy figures standardised to 3P WLTP.

**Stock ID: 31996**



AJ Motors Christchurch City | Phone 0800 566 789 | Email [sockburn@ajmotors.co.nz](mailto:sockburn@ajmotors.co.nz)  
393 Ferry Road, Woolston, Christchurch 8023, New Zealand  
[www.ajmotors.co.nz](http://www.ajmotors.co.nz)