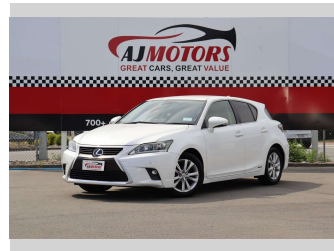


2014 Lexus CT CT200H VERSION C



Purchase Price **POA**

Includes GST, Registration & Licensing

Finance may be available on this vehicle. Ask one of our friendly staff for more information.

Gain peace of mind with Mechanical Breakdown Insurance. **Ask us how.**

Top features

- » All auto windows
- » Auto air-condition
- » Auto Door Lock
- » Auto headlight
- » Bluetooth
- » Cruise control
- » Eco Mode
- » electric seats
- » Electronic stability c...
- » EV mode
- » Fog Lights
- » Heated Seats
- » Keyless entry
- » Multi-function steerin...
- » Paddle Shifters
- » Parking Sensors
- » Push button start
- » Reversing Camera

Body Style
5 door, Hatchback

Odometer
125,400 km

Engine
1800 cc, Petrol hybrid

Fuel Type
Petrol

Transmission
CVT, 2WD

Wheels
16"

VIN
7AT0B010X25224972

Interior
Black

Safety



Based on 2025 VSRR rating

Reg No.

-

Ext Colour
White

History
Ex-Overseas

Seats
5 seats

CO2 Emissions
★★★★☆
109 grams/km

Energy Economy
★★★★☆☆

Annual fuel cost of \$1,840
4.7L per 100km

Cost per year is an estimate based on petrol price of \$2.80 per litre and an average distance of 14000 km. Emissions and Energy Economy figures standardised to 3P WLTP.

Stock ID: 31143



AJ Motors Christchurch | Phone 0800 566 789 | Email christchurch@ajmotors.co.nz
207 Main South Road, Hornby, Christchurch 8042, New Zealand
www.ajmotors.co.nz