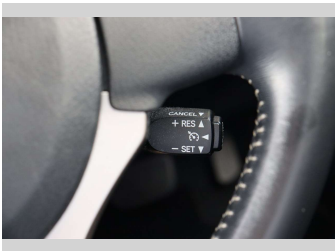
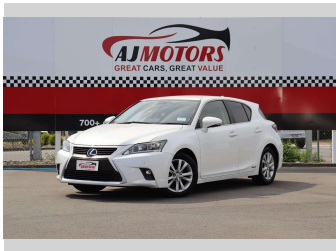


2014 Lexus CT 200h Version C



Purchase Price

\$14,980

Includes GST

Excludes on-road costs of \$695

Finance may be available on this vehicle. Ask one of our friendly staff for more information.

finance

NOW

Gain peace of mind with Mechanical Breakdown Insurance. Ask us how.

autosure

INSURANCE

Top features

» All auto windows

» Auto air-condition

» Auto Door Lock

» Auto headlight

» Bluetooth

» Cruise control

» Eco Mode

» electric seats

» Electronic stability c...

» EV mode

» Fog Lights

» Heated Seats

» Keyless entry

» Multi-function steerin...

» Paddle Shifters

» Parking Sensors

» Push button start

» Reversing Camera

Body Style

5 door, Hatchback

Odometer

125,400 km

Engine

1800 cc, Petrol hybrid

Fuel Type

Petrol

Transmission

CVT, 2WD

Wheels

16"

VIN

7AT0B010X25224972

Interior

Black

Safety



Based on 2025 VSRR rating

Reg No.

-

Ext Colour

White

History

Ex-Overseas

Seats

5 seats

CO2 Emissions

★★★★☆

109 grams/km

Energy Economy

★★★★☆☆

Annual fuel cost of \$1,840

4.7L per 100km

Cost per year is an estimate based on petrol price of \$2.80 per litre and an average distance of 14000 km. Emissions and Energy Economy figures standardised to 3P WLTP.

Stock ID: 31143



AJ Motors Christchurch City | Phone 0800 566 789 | Email sockburn@ajmotors.co.nz

393 Ferry Road, Woolston, Christchurch 8023, New Zealand

www.ajmotors.co.nz