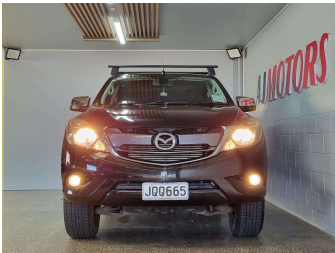


2016 Mazda BT-50 GSX (NZ New)



Purchase Price

\$25,988

Includes GST, Registration & Licensing

Indicative repayments

\$176.97 per week*

Based on a 48 month term & no deposit.
Total repayments (208) = \$36,809.18

finance

NOW

Gain peace of mind with
Mechanical Breakdown
Insurance. Ask us how.



Top features

» AA Appraised

Body Style

4 door, Ute

Odometer

92,431 km

Engine

3200 cc, Internal Combustion

Fuel Type

Diesel

Transmission

6-Speed Tiptronic, Rear Wheel

Wheels

17", Factory Alloys

VIN

MM0UR0YF100535114

Interior

Black, Cloth

Safety


Based on 2023 UCSR rating
for 15-21 models

Reg No.

JQQ665

Ext Colour

Black

History

NZ New, 2 owners

Seats

5 seats

CO2 Emissions

★☆☆☆☆
273 grams/km

Energy Economy

★☆☆☆☆
Annual fuel cost of \$3,920
10.2L per 100km

Cost per year is an estimate based
on diesel price of \$2.00 per litre and
an average distance of 14000 km
includes Road User Charges.
Emissions and Energy Economy
figures standardised to 3P WLTP.

Stock ID: 18736



AJ Motors Hamilton | Phone 0800 566 789 | Email
teamhamilton@ajmotors.co.nz
232 Kahikatea Drive, Frankton, Hamilton 3204, New Zealand
www.ajmotors.co.nz

* AJ Motors Hamilton is not a lender nor a financial adviser. Any amounts displayed should not be seen as an offer of finance or taken as financial advice. The interest rate, fees and loan term used in this calculation may not actually represent those available from lenders. Actual interest rates, fees and loan terms will vary per lender and are typically based on an assessment of your credit risk and responsible lending criteria. Any repayment amounts displayed are indicative only and have been calculated using several other indicative inputs. The interest rate used in this calculation is an arbitrary 16.95%, however exact interest rates vary per lender. The term of the loan used in this calculation is 48 month. Exact terms available vary per lender although options typically include 6, 12, 18, 24, 36, 48 and 60 months. This calculation also includes two typical mandatory fees charged by lenders. These are an account admin fee of \$3.00 per month (other payment frequencies may be available) and a one-off establishment fee of \$508.00. Typically, this fee can be paid upfront or, as in this calculation, be capitalised over the contract term, ie. included in the loan amount. These fees can vary per lender and other non-mandatory fees and charges may also apply. The total amount of repayments has been calculated by multiplying 208 weekly repayments (based on a 48 month term) by the weekly repayment amount of \$176.97 which equals \$36,809.18. This calculator does not consider any of your own personal circumstances and we strongly suggest you seek budgeting advice prior to committing to any loan contract. Responsible lending criteria and lender terms and conditions will likely apply to any finalised loan contract. Proof of security and/or vehicle insurance may also be required before proceeding.