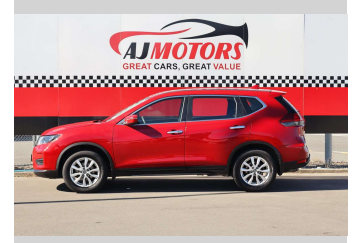
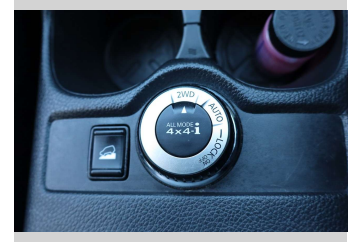



2021 Nissan X-Trail 2.5P/4WD/6CVT




Purchase Price **POA**
Includes GST, Registration & Licensing

Finance may be available on this vehicle. Ask one of our friendly staff for more information.



Gain peace of mind with Mechanical Breakdown Insurance. **Ask us how.**



- Top features**
- » 4WD Mode Control Switc...
 - » ABS
 - » Air Conditioning
 - » Cruise control
 - » Daytime running light
 - » Eco Mode
 - » Push button start
 - » Rear Wiper
 - » Reversing Camera
 - » Smart key system with...
 - » Traction control

Body Style
4 door, RV/SUV

Odometer
123,500 km

Engine
2488 cc, Internal Combustion

Fuel Type
Petrol

Transmission
Automatic, 4WD

Wheels
17"

VIN
JN1TBNT32A0065574

Interior
Black

Safety

Based on 2025 VSRR rating

Reg No.
NTE101

Ext Colour
Red

History
Ex-Overseas

Seats
5 seats

CO2 Emissions
★★★★☆☆
214 grams/km

Energy Economy
★★★★☆☆
Annual fuel cost of \$3,610
9.2L per 100km

Cost per year is an estimate based on petrol price of \$2.80 per litre and an average distance of 14000 km. Emissions and Energy Economy figures standardised to 3P WLTP.

Stock ID: 34088



AJ Motors Christchurch | Phone 0800 566 789 | Email christchurch@ajmotors.co.nz
207 Main South Road, Hornby, Christchurch 8042, New Zealand
www.ajmotors.co.nz