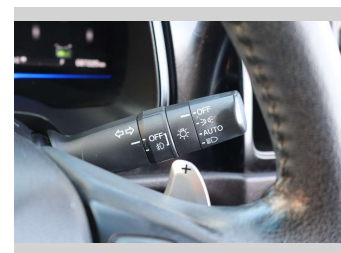
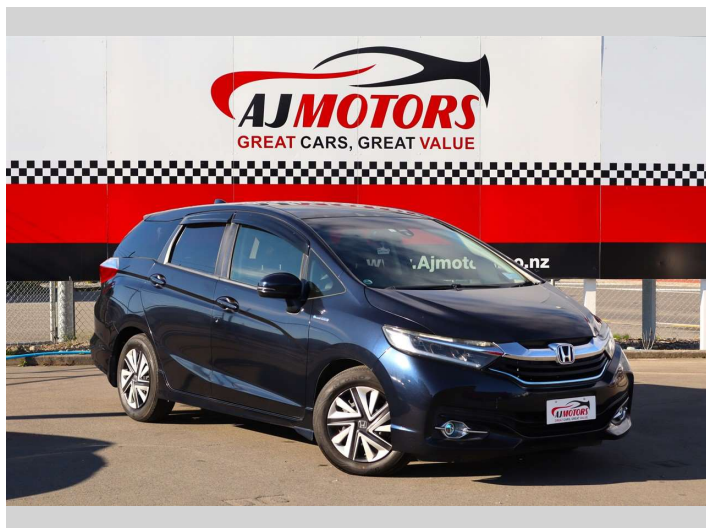



2015 Honda Shuttle 1.5L Petrol Hybrid




Purchase Price **POA**
Includes GST, Registration & Licensing

Finance may be available on this vehicle. Ask one of our friendly staff for more information.



Gain peace of mind with Mechanical Breakdown Insurance. **Ask us how.**



- Top features**
- » ABS
 - » Auto air-condition
 - » Auto headlight
 - » Bluetooth
 - » Cruise control
 - » Electronic stability c...
 - » Paddle Shifters
 - » Push button start
 - » Rain-sensing Wipers
 - » Rear Wiper
 - » Reversing Camera
 - » Smart key system with...
 - » Sport mode

Body Style
4 door, Hatchback

Odometer
87,300 km

Engine
1496 cc, Hybrid

Fuel Type
Petrol

Transmission
Automatic, 2WD

Wheels
15"

VIN
7AT08G1XX26005937

Interior
Black

Safety



Based on 2025 VSRR rating

Reg No.

-

Ext Colour
Blue

History
Ex-Overseas

Seats
5 seats

CO2 Emissions
★★★★☆
95 grams/km

Energy Economy
★★★★☆☆

Annual fuel cost of \$1,570
4L per 100km

Cost per year is an estimate based on petrol price of \$2.80 per litre and an average distance of 14000 km. Emissions and Energy Economy figures standardised to 3P WLTP.

Stock ID: 34336



AJ Motors Christchurch | Phone 0800 566 789 | Email christchurch@ajmotors.co.nz
207 Main South Road, Hornby, Christchurch 8042, New Zealand
www.ajmotors.co.nz