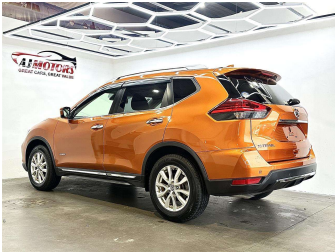


2017 Nissan X-Trail 20X HYBRID



Purchase Price

\$27,480

Includes GST

Excludes on-road costs of \$695

Indicative repayments

\$157.95

per week*

Based on a 60 month term & no deposit.
Total repayments (260) = \$41,068.23

finance

NOW

Gain peace of mind with
Mechanical Breakdown
Insurance. **Ask us how.**



Top features

» 360 Degree Reversing C...

» ABS

» Air Conditioning

» Alloy Wheels

» CD Player

» Climate Control

» DVD Player

» Electric Mirrors

» EV mode

» Leather Seats

» Push button start

» PWR Mode

» Rear Wiper

» Reversing Camera

» Traction control

Body Style

5 door, RV/SUV

Odometer

36,000 km

Engine

2000 cc, Hybrid

Fuel Type

Hybrid

Transmission

Automatic

Wheels

Factory Alloys

VIN

7AT0DH6LX24150204

Interior

Black, Leather

Safety



Based on 2023 UCSR rating
for 14-21 models

Reg No.

-

Ext Colour

Orange

History

Ex-Overseas

Seats

5 seats, Leather

CO2 Emissions

★★★★☆
133 grams/km

Energy Economy

★★★★☆☆
Annual fuel cost of \$2,230
5.7L per 100km

Cost per year is an estimate based
on petrol price of \$2.80 per litre and
an average distance of 14000 km.
Emissions and Energy Economy
figures standardised to 3P WLTP.

Stock ID: 18741



AJ Motors Henderson | Phone 0800 566 789 | Email prestige@ajmotors.co.nz
34 Paramount Drive, Henderson, Auckland 0610, New Zealand
www.ajmotors.co.nz

* AJ Motors Henderson is not a lender nor a financial adviser. Any amounts displayed should not be seen as an offer of finance or taken as financial advice. The interest rate, fees and loan term used in this calculation may not actually represent those available from lenders. Actual interest rates, fees and loan terms will vary per lender and are typically based on an assessment of your credit risk and responsible lending criteria. Any repayment amounts displayed are indicative only and have been calculated using several other indicative inputs. The interest rate used in this calculation is an arbitrary 14.95%, however exact interest rates vary per lender. The term of the loan used in this calculation is 60 month. Exact terms available vary per lender although options typically include 6, 12, 18, 24, 36, 48 and 60 months. This calculation also includes two typical mandatory fees charged by lenders. These are an account admin fee of \$2.50 per month (other payment frequencies may be available) and a one-off establishment fee of \$523.00. Typically, this fee can be paid upfront or, as in this calculation, be capitalised over the contract term, ie. included in the loan amount. These fees can vary per lender and other non-mandatory fees and charges may also apply. The total amount of repayments has been calculated by multiplying 260 weekly repayments (based on a 60 month term) by the weekly repayment amount of \$157.95 which equals \$41,068.23. This calculator does not consider any of your own personal circumstances and we strongly suggest you seek budgeting advice prior to committing to any loan contract. Responsible lending criteria and lender terms and conditions will likely apply to any finalised loan contract. Proof of security and/or vehicle insurance may also be required before proceeding.