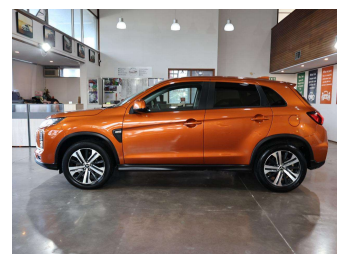


2023 Mitsubishi ASX LS (NZ New)



Purchase Price **\$22,980**

Includes GST
Excludes on-road costs of \$695

Finance may be available on this vehicle. Ask one of our friendly staff for more information.



Gain peace of mind with Mechanical Breakdown Insurance. **Ask us how.**



Top features

None Listed

Body Style
5 door, RV/SUV

Odometer
46,000 km

Engine
1998 cc, Internal Combustion

Fuel Type
Petrol


Transmission
Automatic, Front Wheel

Wheels
17", Factory Alloys

VIN
JMFXTGA2WPU004487

Interior
Black, Plastic

Safety



Based on 2025 UCSR rating for 19-23 models

Reg No.
QAB286

Ext Colour
Orange

History
NZ New

Seats
5 seats, Fabric

CO2 Emissions
★★★★☆
196 grams/km

Energy Economy
★★★★☆
Annual fuel cost of \$3,330
8.5L per 100km

Cost per year is an estimate based on petrol price of \$2.80 per litre and an average distance of 14000 km. Emissions and Energy Economy figures standardised to 3P WLTP.

Stock ID: 36054



AJ Motors Wellington | Phone 0800 566 789 | Email kim@ajmotors.co.nz
35 Annie Huggan Grove, Petone, Lower Hutt 5012, New Zealand
www.ajmotors.co.nz