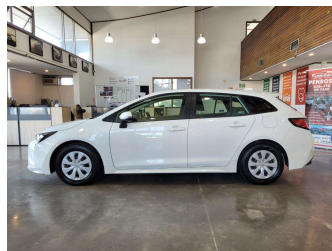


2022 Toyota Corolla TOURING HYBRID G-X



Purchase Price

\$23,980

Includes GST
Excludes on-road costs of \$695

Indicative repayments

\$135.66 per week*

Based on a 60 month term & no deposit.
Total repayments (260) = **\$35,271.5**

finance
NOW

Gain peace of mind with
Mechanical Breakdown
Insurance. **Ask us how.**

autosure
INSURANCE

Top features

- » ABS
- » Air Conditioning
- » All auto windows
- » Bluetooth
- » Central Locking
- » Child seat anchor poin...
- » Cruise control
- » Eco Mode
- » Electric Mirrors (Retr...
- » Electronic Parking Bra...
- » Headlights - LED with...
- » Lane Departure Warning
- » Multi-function steerin...
- » Power window
- » Pre crush safety
- » Push button start
- » Rear Wiper
- » Reversing Camera

Body Style

5 door, Station Wagon

Reg No.

-

Odometer

83,000 km

Ext Colour

White

Engine

1800 cc, Hybrid

History

Ex-Overseas

Fuel Type

Electricity

Seats

5 seats, Fabric

Transmission

Automatic, Front Wheel

CO2 Emissions

-

Wheels

15", Steel Wheels

Energy Economy

-

VIN

-

Interior

Black, Plastic

Safety

-

Stock ID: 31310



AJ Motors Penrose | Phone 0800 566 789 | Email penrose@ajmotors.co.nz
695 Great South Road, Penrose, Auckland 1061, New Zealand
www.ajmotors.co.nz

* AJ Motors Penrose is not a lender nor a financial adviser. Any amounts displayed should not be seen as an offer of finance or taken as financial advice. The interest rate, fees and loan term used in this calculation may not actually represent those available from lenders. Actual interest rates, fees and loan terms will vary per lender and are typically based on an assessment of your credit risk and responsible lending criteria. Any repayment amounts displayed are indicative only and have been calculated using several other indicative inputs. The interest rate used in this calculation is an arbitrary 13.95%, however exact interest rates vary per lender. The term of the loan used in this calculation is 60 month. Exact terms available vary per lender although options typically include 6, 12, 18, 24, 36, 48 and 60 months. This calculation also includes two typical mandatory fees charged by lenders. These are an account admin fee of \$2.50 per month (other payment frequencies may be available) and a one-off establishment fee of \$510.00. Typically, this fee can be paid upfront or, as in this calculation, be capitalised over the contract term, ie. included in the loan amount. These fees can vary per lender and other non-mandatory fees and charges may also apply. The total amount of repayments has been calculated by multiplying 260 weekly repayments (based on a 60 month term) by the weekly repayment amount of \$135.66 which equals \$35,271.50. This calculator does not consider any of your own personal circumstances and we strongly suggest you seek budgeting advice prior to committing to any loan contract. Responsible lending criteria and lender terms and conditions will likely apply to any finalised loan contract. Proof of security and/or vehicle insurance may also be required before proceeding.

Vehicle data updated 29 November 2025 17:17