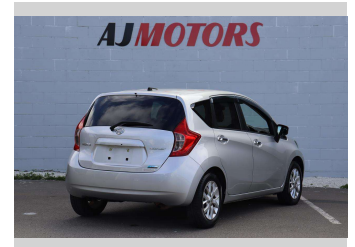



2015 Nissan Note MEDALIST EMABREP




Purchase Price **\$9,980**
Includes GST
 Excludes on-road costs of \$695

Finance may be available on this vehicle. Ask one of our friendly staff for more information.



Gain peace of mind with Mechanical Breakdown Insurance. **Ask us how.**



- Top features**
- » Air Conditioning
 - » Alloy Wheels
 - » Auto air-condition
 - » Auto headlight
 - » Auto Start Stop
 - » Bluetooth
 - » Central Locking
 - » Child seat anchor poin...
 - » Eco Mode
 - » Electric Mirror
 - » Fog Lights
 - » Forward Collision Miti...
 - » Keyless entry
 - » Lane Departure Warning
 - » Push button start
 - » Rear Wiper

Body Style
4 door, Hatchback

Odometer
96,000 km

Engine
1200 cc, Internal Combustion

Fuel Type
Petrol

Transmission
Automatic, Front Wheel

Wheels
15", Factory Alloys

VIN
7AT0DH79X23316005

Interior
Black and Brown, Plastic

Safety

 Based on 2023 VSRR rating

Reg No.
 -

Ext Colour
Silver

History
Ex-Overseas

Seats
5 seats, half leather

CO2 Emissions
★★★★☆
119 grams/km

Energy Economy
★★★★☆☆
Annual fuel cost of \$2,000
5.1L per 100km

Cost per year is an estimate based on petrol price of \$2.80 per litre and an average distance of 14000 km. Emissions and Energy Economy figures standardised to 3P WLTP.

Stock ID: 14523



AJ Motors Sockburn | Phone 0800 566 789 | Email sockburn@ajmotors.co.nz
 466 Blenheim Road, Sockburn, Christchurch 8042, New Zealand
 www.ajmotors.co.nz