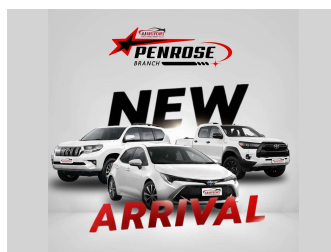
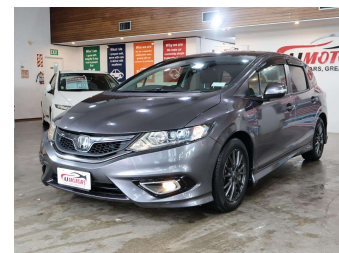


2017 Honda Jade HYBRID



Purchase Price **\$15,980**

Includes GST
Excludes on-road costs of \$695

Finance may be available on this vehicle. Ask one of our friendly staff for more information.



Gain peace of mind with Mechanical Breakdown Insurance. **Ask us how.**



Top features

None Listed

Body Style
5 door, Station Wagon

Odometer
96,353 km

Engine
1496 cc, Hybrid

Fuel Type
Petrol

Transmission
Automatic, Front Wheel

Wheels
16", Custom Alloys

VIN
7AT08G9GX26015703

Interior
Black, Plastic

Safety



Based on 2025 VSRR rating

Reg No.

-

Ext Colour
GRAY

History
Ex-Overseas

Seats
6 seats, Fabric

CO2 Emissions
★★★★☆
115 grams/km

Energy Economy
★★★★☆☆

Annual fuel cost of \$1,920
4.9L per 100km

Cost per year is an estimate based on petrol price of \$2.80 per litre and an average distance of 14000 km. Emissions and Energy Economy figures standardised to 3P WLTP.

Stock ID: 34321



AJ Motors Wellington | Phone 0800 566 789 | Email kim@ajmotors.co.nz
35 Annie Huggan Grove, Petone, Lower Hutt 5012, New Zealand
www.ajmotors.co.nz