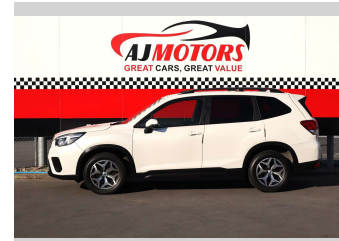
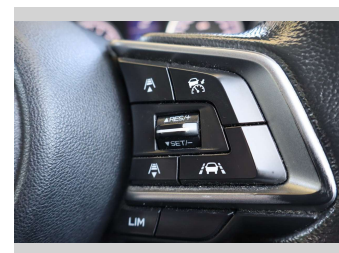



# 2019 Subaru Forester 2.5P/4WD (NZ New)



**Purchase Price** **POA**  
Includes GST, Registration & Licensing

Finance may be available on this vehicle. Ask one of our friendly staff for more information.



Gain peace of mind with Mechanical Breakdown Insurance. **Ask us how.**



- Top features**
- » ABS
  - » Adaptive Cruise Control
  - » Auto air-condition
  - » Auto headlight
  - » Fog Lights
  - » Rain-sensing Wipers
  - » Rear Wiper
  - » Reversing Camera
  - » Smart key system with...
  - » Tow Bar
  - » X-MODE

Body Style  
**4 door, RV/SUV**

Odometer  
**161,200 km**

Engine  
**2498 cc, Internal Combustion**

Fuel Type  
**Petrol**

Transmission  
**Automatic, AWD**

Wheels  
**17"**

VIN  
**JF2SK9KL5KG011978**

Interior  
**Black**

Safety



Based on 2025 UCSR rating for 12-18 models

Reg No.  
**PPD575**

Ext Colour  
**White**

History  
**Ex-Overseas**

Seats  
**5 seats**

CO2 Emissions  
**★★★★☆**  
**187 grams/km**

Energy Economy  
**★★☆☆☆☆**

**Annual fuel cost of \$3,210**  
**8.2L per 100km**

Cost per year is an estimate based on petrol price of \$2.80 per litre and an average distance of 14000 km. Emissions and Energy Economy figures standardised to 3P WLTP.

**Stock ID: 36460**



AJ Motors Christchurch | Phone 0800 566 789 | Email christchurch@ajmotors.co.nz  
207 Main South Road, Hornby, Christchurch 8042, New Zealand  
www.ajmotors.co.nz