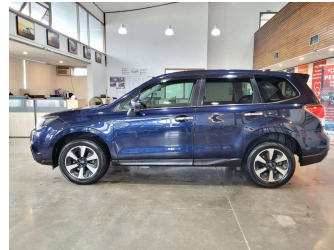


2016 Subaru Forester 2.0I-L EYE SIGHT 4WD



Purchase Price **\$18,980**
Includes GST, Registration & Licensing

Finance may be available on this vehicle. Ask one of our friendly staff for more information.



Gain peace of mind with Mechanical Breakdown Insurance. **Ask us how.**



Top features

- » ABS
- » Air Conditioning
- » Alloy Wheels
- » Bluetooth
- » Central Locking
- » Child seat anchor poin...
- » Cruise control
- » Eco Mode
- » Electric Mirrors (Retr...
- » Eyesight
- » Fog Lights
- » Headlights - LED with...
- » Heated Seats
- » Lane Departure Warning
- » Multi-function steerin...
- » Power Seat Adjustment
- » Power window
- » Pre crush safety

Body Style
5 door, RV/SUV

Odometer
90,000 km

Engine
1995 cc, Internal Combustion

Fuel Type
Petrol


Transmission
Automatic, 4WD

Wheels
17", Factory Alloys

VIN
7AT0GF17X24095487

Interior
Black, Plastic

Safety



Based on 2024 UCSR rating for 12-18 models

Reg No.
QUW167

Ext Colour
Dark Blue

History
-

Seats
5 seats, Fabric

CO2 Emissions
★★★★☆
165 grams/km

Energy Economy
★★★★☆☆
Annual fuel cost of \$2,780
7.1L per 100km

Cost per year is an estimate based on petrol price of \$2.80 per litre and an average distance of 14000 km. Emissions and Energy Economy figures standardised to 3P WLTP.

Stock ID: 31129



AJ Motors Wellington | Phone 0800 566 789 | Email kim@ajmotors.co.nz
35 Annie Huggan Grove, Petone, Lower Hutt 5012, New Zealand
www.ajmotors.co.nz