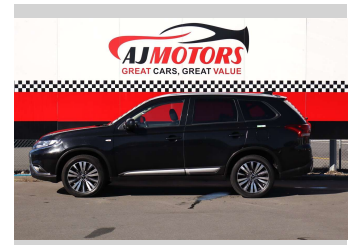



# 2022 Mitsubishi Outlander LS 2.4P/4WD/CVT



**Purchase Price** **POA**  
Includes GST, Registration & Licensing

Finance may be available on this vehicle. Ask one of our friendly staff for more information.



Gain peace of mind with Mechanical Breakdown Insurance. **Ask us how.**



- Top features**
- » ABS
  - » All auto windows
  - » Auto air-condition
  - » Auto headlight
  - » Auto Hold
  - » Bluetooth
  - » Cruise control
  - » Drive Mode Selector (2...)
  - » Eco Mode
  - » Fog Lights
  - » Parking Sensors
  - » Push button start
  - » Rain-sensing Wipers
  - » Rear Wiper
  - » Reversing Camera
  - » Smart key system with...
  - » Traction control

Body Style  
**4 door, RV/SUV**

Odometer  
**118,700 km**

Engine  
**2360 cc, Internal Combustion**

Fuel Type  
**Petrol**

Transmission  
**Automatic, 4WD**

Wheels  
**18"**

VIN  
**JMFXTGF8WLZ031875**

Interior  
**Black**

Safety  


Based on 2025 UCSR rating for 12-21 models

Reg No.  
**PFM829**

Ext Colour  
**Black**

History  
**Ex-Overseas**

Seats  
**7 seats**

CO2 Emissions  
**★★★★☆**  
**186 grams/km**

Energy Economy  
**★★☆☆☆☆**

**Annual fuel cost of \$3,140**  
**8L per 100km**

Cost per year is an estimate based on petrol price of \$2.80 per litre and an average distance of 14000 km. Emissions and Energy Economy figures standardised to 3P WLTP.

**Stock ID: 34895**



AJ Motors Christchurch | Phone 0800 566 789 | Email christchurch@ajmotors.co.nz  
207 Main South Road, Hornby, Christchurch 8042, New Zealand  
www.ajmotors.co.nz